

TAB3 Rabbit Polyclonal Antibody

Catalog No: #54590



Package Size: #54590-1 50ul #54590-2 100ul

Orders: order@signalwayantibody.com

Support: tech@signalwayantibody.com

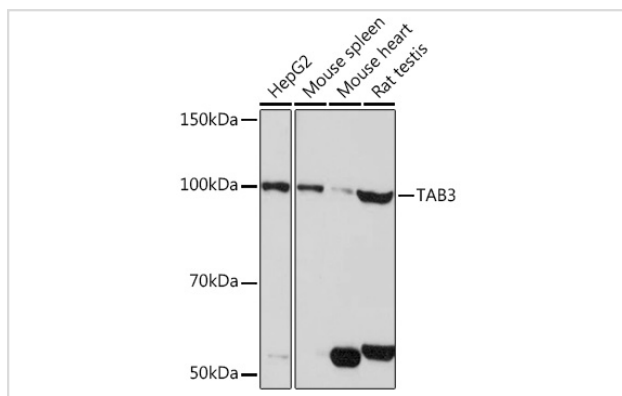
Description

Product Name	TAB3 Rabbit Polyclonal Antibody
Host Species	Rabbit
Clonality	Polyclonal
Isotype	IgG
Purification	Affinity purification
Applications	WB,IHC
Species Reactivity	Human,Mouse,Rat
Immunogen Description	Recombinant protein of human TAB3.
Other Names	MAP3K7IP3, NAP1
Accession No.	Swiss Prot:Q8N5C8Gene ID:257397
Calculated MW	—
SDS-PAGE MW	100kDa
Formulation	Buffer: PBS with 0.02% sodium azide,50% glycerol,pH7.3.
Storage	Store at -20°C. Avoid freeze / thaw cycles.

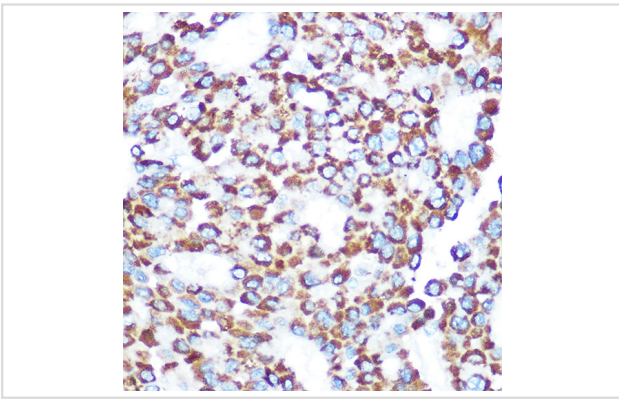
Application Details

WB □ 1:2000 - 1:5000 IHC □ 1:50 - 1:200

Images



Western blot analysis of extracts of various cell lines, using TAB3 pAb.



Immunohistochemistry of paraffin-embedded human liver cancer using TAB3 Rabbit pAb.

Background

The product of this gene functions in the NF-kappaB signal transduction pathway. The encoded protein, and the similar and functionally redundant protein MAP3K7IP2/TAB2, forms a ternary complex with the protein kinase MAP3K7/TAK1 and either TRAF2 or TRAF6 in response to stimulation with the pro-inflammatory cytokines TNF or IL-1. Subsequent MAP3K7/TAK1 kinase activity triggers a signaling cascade leading to activation of the NF-kappaB transcription factor. The human genome contains a related pseudogene. Alternatively spliced transcript variants have been described, but their biological validity has not been determined. [provided by RefSeq, Jul 2008]

Note: This product is for in vitro research use only and is not intended for use in humans or animals.