

MARK3 Rabbit Polyclonal Antibody

Catalog No: #54620



Package Size: #54620-1 50ul #54620-2 100ul

Orders: order@signalwayantibody.comSupport: tech@signalwayantibody.com

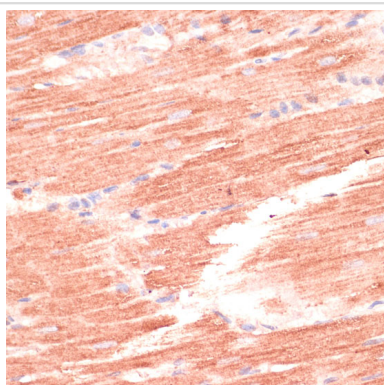
Description

Product Name	MARK3 Rabbit Polyclonal Antibody
Host Species	Rabbit
Clonality	Polyclonal
Isotype	IgG
Purification	Affinity purification
Applications	WB,IHC
Species Reactivity	Human,Mouse,Rat
Immunogen Description	Recombinant protein of human MARK3.
Other Names	CTAK1;KP78;PAR1A;Par-1a;MARK3
Accession No.	Swiss Prot:P27448Gene ID:4140
Calculated MW	—
SDS-PAGE MW	Refer to figures
Formulation	Buffer: PBS with 0.02% sodium azide,50% glycerol,pH7.3.
Storage	Store at -20°C. Avoid freeze / thaw cycles.

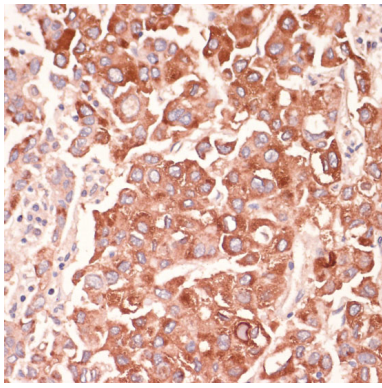
Application Details

WB □ 1:2000 - 1:5000 IHC □ 1:50 - 1:200

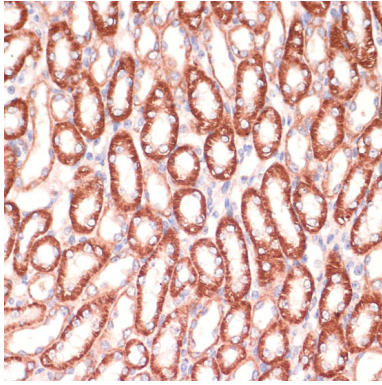
Images



Immunohistochemistry of paraffin-embedded rat heart using MARK3 antibody.



Immunohistochemistry of paraffin-embedded human liver cancer using MARK3 antibody.



Immunohistochemistry of paraffin-embedded mouse kidney using MARK3 antibody.

Background

The protein encoded by this gene is activated by phosphorylation and in turn is involved in the phosphorylation of tau proteins MAP2 and MAP4. Several transcript variants encoding different isoforms have been found for this gene. [provided by RefSeq, Oct 2011]

Note: This product is for in vitro research use only and is not intended for use in humans or animals.