

JMJD1C Rabbit Polyclonal Antibody

Catalog No: #54639

Package Size: #54639-1 50ul #54639-2 100ul

Orders: order@signalwayantibody.comSupport: tech@signalwayantibody.com

Description

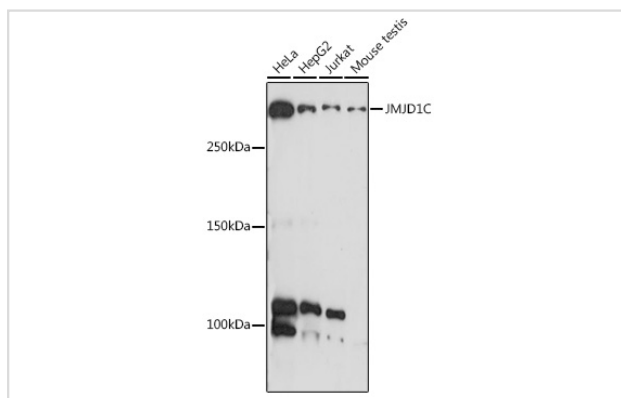
Product Name	JMJD1C Rabbit Polyclonal Antibody
Host Species	Rabbit
Clonality	Polyclonal
Isotype	IgG
Purification	Affinity purification
Applications	WB,IHC
Species Reactivity	Human,Mouse,Rat
Immunogen Description	Recombinant protein of human JMJD1C.
Other Names	KDM3C; TRIP8; TRIP-8
Accession No.	Swiss Prot:Q15652Gene ID:221037
Calculated MW	284kDa
SDS-PAGE MW	285KDa
Formulation	Buffer: PBS with 0.02% sodium azide,50% glycerol,pH7.3.
Storage	Store at -20°C. Avoid freeze / thaw cycles.

Application Details

WB 1:500 - 1:1000

IHC 1:50 - 1:200

Images



Western blot analysis of extracts of various cell lines, using JMJD1C antibody.

Background

The protein encoded by this gene interacts with thyroid hormone receptors and contains a jumonji domain. It is a candidate histone demethylase and is thought to be a coactivator for key transcription factors. It plays a role in the DNA-damage response pathway by demethylating the mediator of DNA damage checkpoint 1 (MDC1) protein, and is required for the survival of acute myeloid leukemia. Mutations in this gene are associated with Rett syndrome and intellectual disability. Alternative splicing results in multiple transcript variants.

Note: This product is for in vitro research use only and is not intended for use in humans or animals.