

MT2A Rabbit Polyclonal Antibody

Catalog No: #54649



Package Size: #54649-1 50ul #54649-2 100ul

Orders: order@signalwayantibody.com

Support: tech@signalwayantibody.com

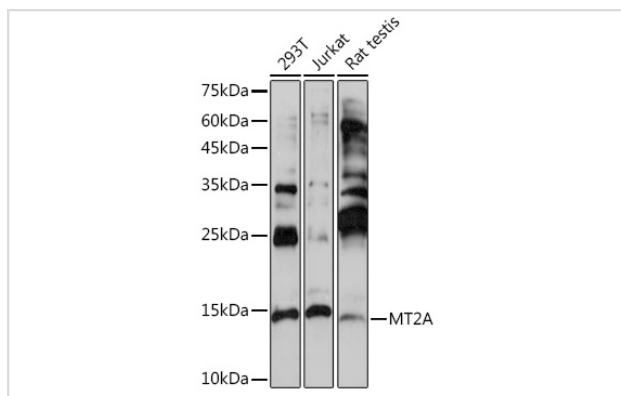
Description

Product Name	MT2A Rabbit Polyclonal Antibody
Host Species	Rabbit
Clonality	Polyclonal
Isotype	IgG
Purification	Affinity purification
Applications	WB,IHC
Species Reactivity	Human,Mouse,Rat
Immunogen Description	Recombinant fusion protein of human MT2A (NP_005944.1).
Other Names	MT2A;MT2
Accession No.	Swiss Prot:P02795Gene ID:4502
Calculated MW	6kDa
SDS-PAGE MW	15KDa
Formulation	Buffer: PBS with 0.02% sodium azide,50% glycerol,pH7.3.
Storage	Store at -20°C. Avoid freeze / thaw cycles.

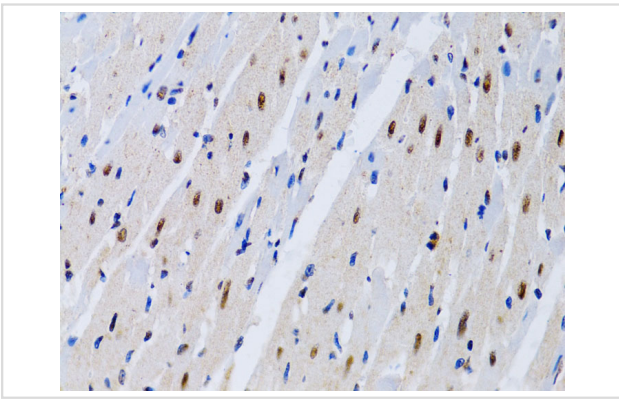
Application Details

WB □ 1:2000 - 1:5000 IHC □ 1:50 - 1:200

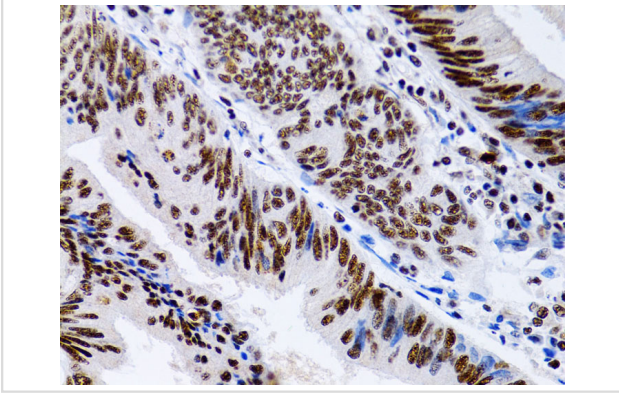
Images



Western blot analysis of extracts of various cell lines, using MT2A Rabbit pAb.



Immunohistochemistry of paraffin-embedded rat heart using MT2A antibody.



Immunohistochemistry of paraffin-embedded human colon cancer using MT2A antibody.

Background

-

Note: This product is for in vitro research use only and is not intended for use in humans or animals.