

MPC2 Rabbit Polyclonal Antibody

Catalog No: #54651



Package Size: #54651-1 50ul #54651-2 100ul

Orders: order@signalwayantibody.com

Support: tech@signalwayantibody.com

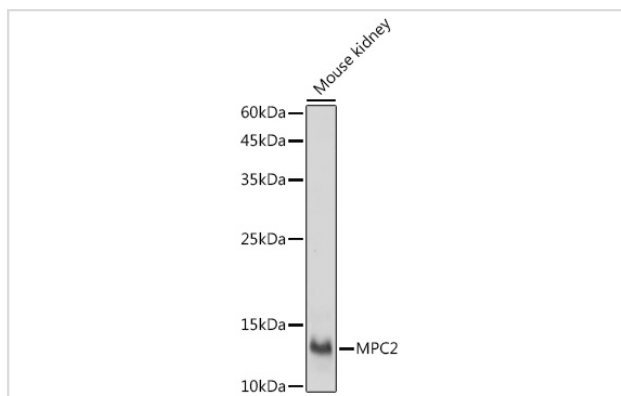
Description

Product Name	MPC2 Rabbit Polyclonal Antibody
Host Species	Rabbit
Clonality	Polyclonal
Isotype	IgG
Purification	Affinity purification
Applications	WB,IHC
Species Reactivity	Mouse,Rat
Immunogen Description	Recombinant protein of human MPC2.
Other Names	BRP44
Accession No.	Swiss Prot:O95563Gene ID:25874
Calculated MW	14kDa
SDS-PAGE MW	14KDa
Formulation	Buffer: PBS with 0.02% sodium azide,50% glycerol,pH7.3.
Storage	Store at -20°C. Avoid freeze / thaw cycles.

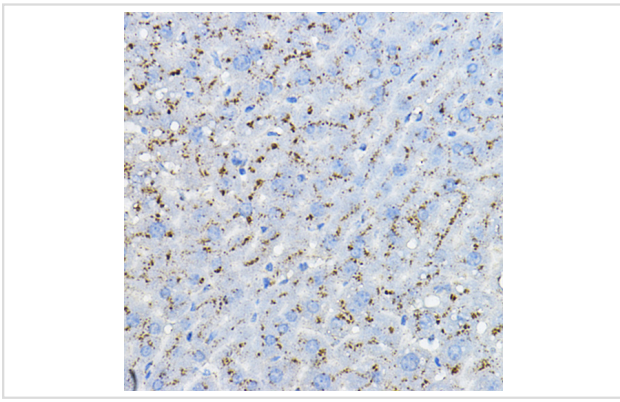
Application Details

WB □ 1:2000 - 1:5000 IHC □ 1:50 - 1:200

Images



Western blot analysis of extracts of Mouse kidney, using MPC2 antibody.



Immunohistochemistry of paraffin-embedded mouse liver using MPC2 Rabbit pAb.

Background

-

Note: This product is for in vitro research use only and is not intended for use in humans or animals.