

## MRPL37 Rabbit Polyclonal Antibody

Catalog No: #54878

Package Size: #54878-1 50ul #54878-2 100ul

Orders: [order@signalwayantibody.com](mailto:order@signalwayantibody.com)Support: [tech@signalwayantibody.com](mailto:tech@signalwayantibody.com)

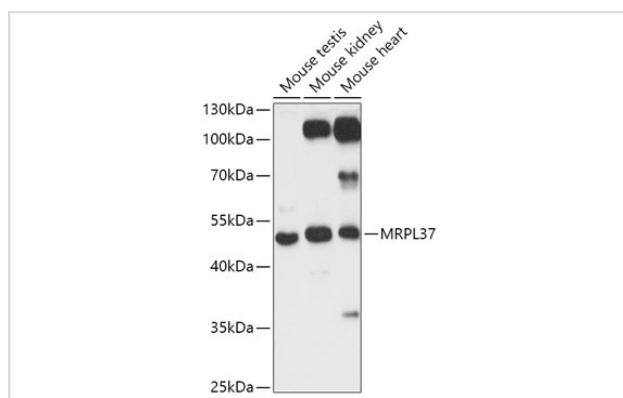
## Description

Product Name	MRPL37 Rabbit Polyclonal Antibody
Host Species	Rabbit
Clonality	Polyclonal
Isotype	IgG
Purification	Affinity purification
Applications	WB,IHC
Species Reactivity	Human,Mouse,Rat
Immunogen Description	Recombinant fusion protein of human MRPL37 (NP_057575.2).
Other Names	MRPL37;L2mt;L37mt;MRP-L2;MRP-L37;MRPL2;RPML2
Accession No.	Swiss Prot:Q9BZE1Gene ID:51253
Calculated MW	48kDa
SDS-PAGE MW	48kDa
Formulation	Buffer: PBS with 0.02% sodium azide,50% glycerol,pH7.3.
Storage	Store at -20°C. Avoid freeze / thaw cycles.

## Application Details

WB□1:2000 - 1:5000IHC□1:50 - 1:200

## Images



Western blot analysis of extracts of various cell lines, using MRPL37 antibody.

## Background

Mammalian mitochondrial ribosomal proteins are encoded by nuclear genes and help in protein synthesis within the mitochondrion. Mitochondrial ribosomes (mitoribosomes) consist of a small 28S subunit and a large 39S subunit. They have an estimated 75% protein to rRNA composition compared to prokaryotic ribosomes, where this ratio is reversed. Another difference between mammalian mitoribosomes and prokaryotic ribosomes is that the latter contain a 5S rRNA. Among different species, the proteins comprising the mitoribosome differ greatly in sequence, and sometimes in biochemical properties, which prevents easy recognition by sequence homology. This gene encodes a 39S subunit protein.

---

Note: This product is for in vitro research use only and is not intended for use in humans or animals.