

## VSIG1 Rabbit Polyclonal Antibody

Catalog No: #54897

Package Size: #54897-1 50ul #54897-2 100ul

Orders: [order@signalwayantibody.com](mailto:order@signalwayantibody.com)Support: [tech@signalwayantibody.com](mailto:tech@signalwayantibody.com)

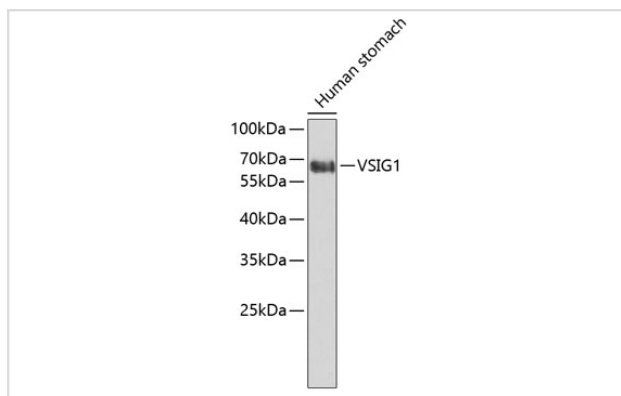
## Description

Product Name	VSIG1 Rabbit Polyclonal Antibody
Host Species	Rabbit
Clonality	Polyclonal
Isotype	IgG
Purification	Affinity purification
Applications	WB,IF
Species Reactivity	Human,Mouse
Immunogen Description	Recombinant fusion protein of human VSIG1 (NP_872413.1).
Other Names	VSIG1;1700062D20Rik;GPA34;dJ889N15.1
Accession No.	Swiss Prot:Q86XK7Gene ID:340547
Calculated MW	41kDa/45kDa
SDS-PAGE MW	65kDa
Formulation	Buffer: PBS with 0.02% sodium azide,50% glycerol,pH7.3.
Storage	Store at -20°C. Avoid freeze / thaw cycles.

## Application Details

WB □ 1:500 - 1:2000 IF □ 1:50 - 1:200

## Images



Western blot analysis of extracts of human stomach, using VSIG1 antibody.

## Background

This gene encodes a member of the junctional adhesion molecule (JAM) family. The encoded protein contains multiple glycosylation sites at the N-terminal region, and multiple phosphorylation sites and glutamic acid/proline (EP) repeats at the C-terminal region. The gene is expressed in normal stomach and testis, as well as in gastric, esophageal and ovarian cancers. Alternatively spliced transcript variants encoding different isoforms have been found for this gene.

---

Note: This product is for in vitro research use only and is not intended for use in humans or animals.