

EZH1 Rabbit Polyclonal Antibody

Catalog No: #54931

Package Size: #54931-1 50ul #54931-2 100ul

Orders: order@signalwayantibody.comSupport: tech@signalwayantibody.com

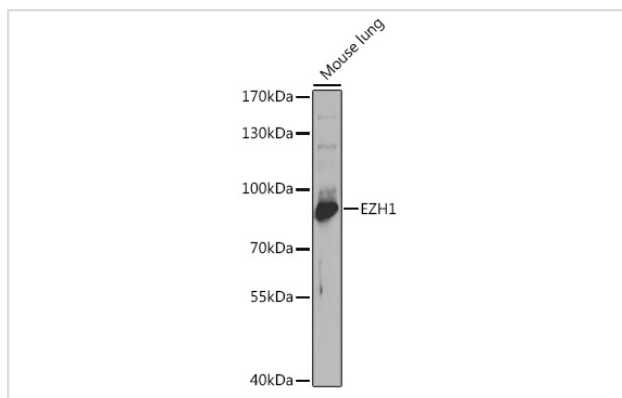
Description

Product Name	EZH1 Rabbit Polyclonal Antibody
Host Species	Rabbit
Clonality	Polyclonal
Isotype	IgG
Purification	Affinity purification
Applications	WB
Species Reactivity	Human,Mouse,Rat
Immunogen Description	Recombinant fusion protein of human EZH1 (NP_001982.2).
Other Names	EZH1;KMT6B
Accession No.	Uniprot:Q92800GeneID:2145
Calculated MW	68kDa/76kDa/80kDa/85kDa/86kDa
SDS-PAGE MW	85kDa
Formulation	PBS with 0.02% sodium azide,50% glycerol,pH7.3.
Storage	Store at -20°C. Avoid freeze / thaw cycles.

Application Details

WB □ 1:500 - 1:2000

Images



Western blot analysis of extracts of mouse lung, using EZH1 antibody.

Background

EZH1 is a component of a noncanonical Polycomb repressive complex-2 (PRC2) that mediates methylation of histone H3 (see MIM 602812) lys27 (H3K27) and functions in the maintenance of embryonic stem cell pluripotency and plasticity (Shen et al., 2008 [PubMed 19026780]).[supplied by OMIM, Mar 2009]

Note: This product is for in vitro research use only and is not intended for use in humans or animals.