

## EIF2S3 Rabbit Polyclonal Antibody

Catalog No: #55002



Package Size: #55002-1 50ul #55002-2 100ul

Orders: order@signalwayantibody.com

Support: tech@signalwayantibody.com

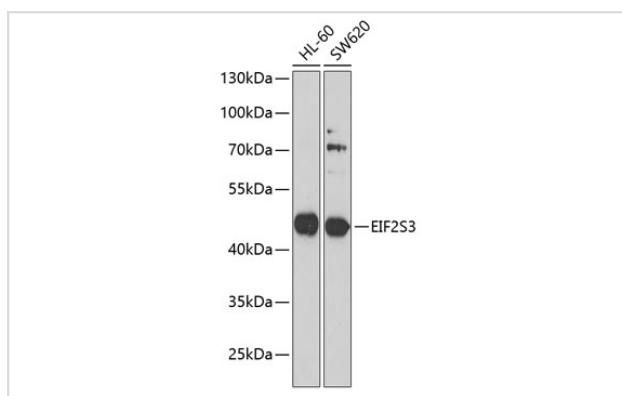
## Description

Product Name	EIF2S3 Rabbit Polyclonal Antibody
Host Species	Rabbit
Clonality	Polyclonal
Isotype	IgG
Purification	Affinity purification
Applications	WB,IHC
Species Reactivity	Human,Mouse,Rat
Immunogen Description	Recombinant fusion protein of human EIF2S3 (NP_001406.1).
Other Names	EIF2S3;EIF2;EIF2G;EIF2gamma;MRXSBRK;eIF-2gA
Accession No.	Swiss Prot:P41091Gene ID:1968
Calculated MW	51kDa
SDS-PAGE MW	51kDa
Formulation	Buffer: PBS with 0.02% sodium azide,50% glycerol,pH7.3.
Storage	Store at -20°C. Avoid freeze / thaw cycles.

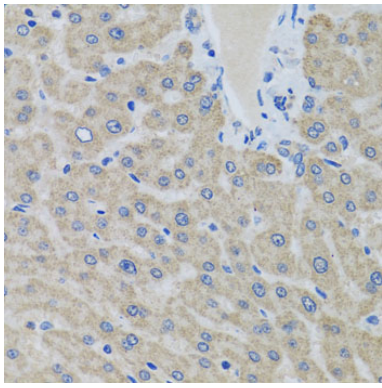
## Application Details

WB □ 1:2000 - 1:5000 IHC □ 1:50 - 1:200

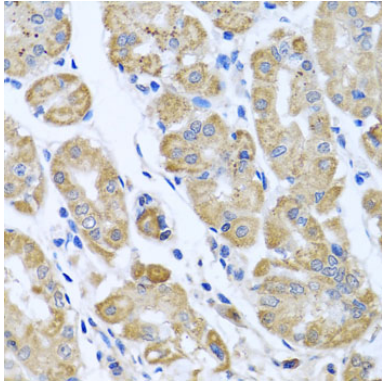
## Images



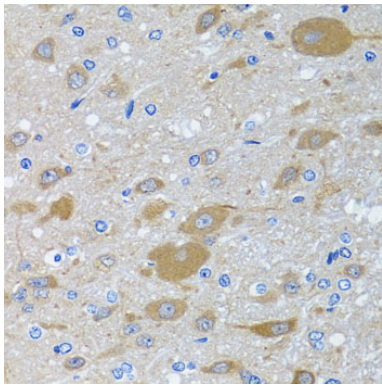
Western blot analysis of extracts of various cell lines, using EIF2S3 antibody.



Immunohistochemistry of paraffin-embedded human liver using EIF2S3 antibody.



Immunohistochemistry of paraffin-embedded human stomach using EIF2S3 antibody.



Immunohistochemistry of paraffin-embedded rat brain using EIF2S3 antibody.

## Background

The protein encoded by this gene is the largest subunit of a heterotrimeric GTP-binding protein involved in the recruitment of methionyl-tRNA(i) to the 40 S ribosomal subunit.

Note: This product is for in vitro research use only and is not intended for use in humans or animals.