

## TFE3 Rabbit Polyclonal Antibody

Catalog No: #55380

Package Size: #55380-1 50ul #55380-2 100ul

Orders: [order@signalwayantibody.com](mailto:order@signalwayantibody.com)Support: [tech@signalwayantibody.com](mailto:tech@signalwayantibody.com)

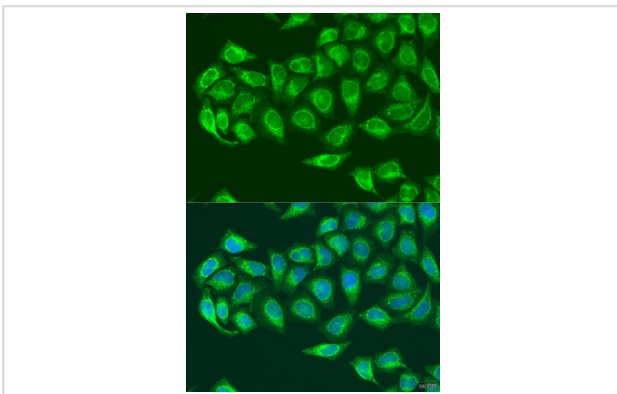
## Description

Product Name	TFE3 Rabbit Polyclonal Antibody
Host Species	Rabbit
Clonality	Polyclonal
Isotype	IgG
Purification	Affinity purification
Applications	WB,IF
Species Reactivity	Human
Immunogen Description	Recombinant fusion protein of human TFE3 (NP_006512.2).
Other Names	TFE3;RCCP2;RCCX1;TFEA;bHLHe33
Accession No.	Swiss Prot:P19532Gene ID:7030
Calculated MW	11kDa/61kDa
SDS-PAGE MW	Refer to figures
Formulation	Buffer: PBS with 0.02% sodium azide,50% glycerol,pH7.3.
Storage	Store at -20°C. Avoid freeze / thaw cycles.

## Application Details

WB □ 1:500 - 1:2000 IF □ 1:50 - 1:200

## Images



Immunofluorescence analysis of U2OS cells using TFE3 antibody.

## Background

This gene encodes a basic helix-loop-helix domain-containing transcription factor that binds MUE3-type E-box sequences in the promoter of genes. The encoded protein promotes the expression of genes downstream of transforming growth factor beta (TGF-beta) signaling. This gene may be involved in chromosomal translocations in renal cell carcinomas and other cancers, resulting in the production of fusion proteins. Translocation partners include PRCC (papillary renal cell carcinoma), NONO (non-POU domain containing, octamer-binding), and ASPSCR1 (alveolar soft part sarcoma chromosome region, candidate 1), among other genes. Alternative splicing results in multiple transcript variants.

---

Note: This product is for in vitro research use only and is not intended for use in humans or animals.