

TMC6 Rabbit Polyclonal Antibody

Catalog No: #55391

Package Size: #55391-1 50ul #55391-2 100ul

Orders: order@signalwayantibody.comSupport: tech@signalwayantibody.com

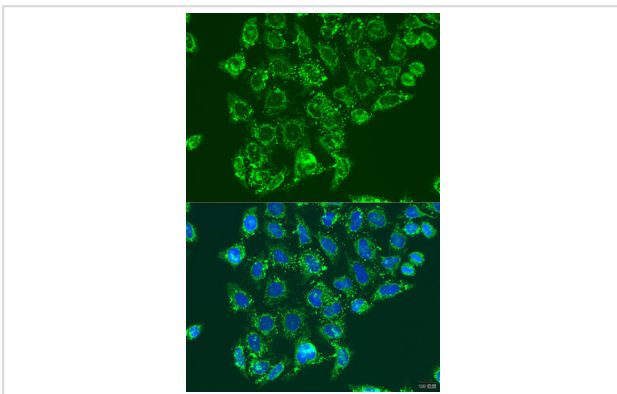
Description

Product Name	TMC6 Rabbit Polyclonal Antibody
Host Species	Rabbit
Clonality	Polyclonal
Isotype	IgG
Purification	Affinity purification
Applications	WB,IF
Species Reactivity	Human
Immunogen Description	Recombinant fusion protein of human TMC6 (NP_009198.4).
Other Names	TMC6;EV1;EVER1;EVIN1;LAK-4P
Accession No.	Swiss Prot:Q7Z403Gene ID:11322
Calculated MW	32kDa/43kDa/50kDa/90kDa
SDS-PAGE MW	Refer to figures
Formulation	Buffer: PBS with 0.02% sodium azide,50% glycerol,pH7.3.
Storage	Store at -20°C. Avoid freeze / thaw cycles.

Application Details

WB □ 1:500 - 1:2000IF □ 1:50 - 1:200

Images



Immunofluorescence analysis of U2OS cells using TMC6 antibody.

Background

Epidermodysplasia verruciformis (EV) is an autosomal recessive dermatosis characterized by abnormal susceptibility to human papillomaviruses (HPVs) and a high rate of progression to squamous cell carcinoma on sun-exposed skin. EV is caused by mutations in either of two adjacent genes located on chromosome 17q25.3. Both of these genes encode integral membrane proteins that localize to the endoplasmic reticulum and are predicted to form transmembrane channels. This gene encodes a transmembrane channel-like protein with 10 transmembrane domains and 2 leucine zipper motifs.

Note: This product is for in vitro research use only and is not intended for use in humans or animals.