

EVA1A Rabbit Polyclonal Antibody

Catalog No: #55412



Package Size: #55412-1 50ul #55412-2 100ul

Orders: order@signalwayantibody.comSupport: tech@signalwayantibody.com

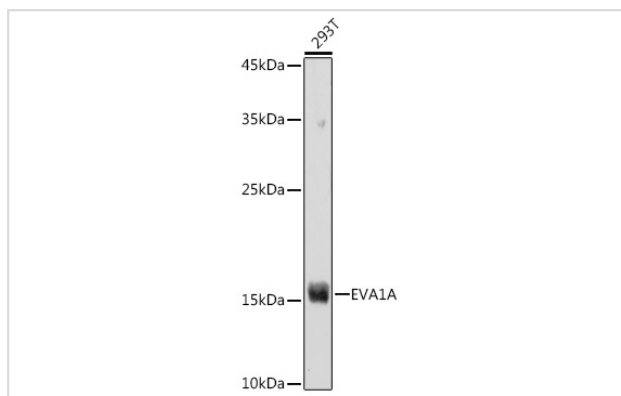
Description

Product Name	EVA1A Rabbit Polyclonal Antibody
Host Species	Rabbit
Clonality	Polyclonal
Isotype	IgG
Purification	Affinity purification
Applications	WB,IHC
Species Reactivity	Human,Mouse,Rat
Immunogen Description	Recombinant fusion protein of human EVA1A (NP_001128504.1).
Other Names	EVA1A;FAM176A;TMEM166
Accession No.	Swiss Prot:Q9H8M9Gene ID:84141
Calculated MW	17kDa
SDS-PAGE MW	17KDa
Formulation	Buffer: PBS with 0.02% sodium azide,50% glycerol,pH7.3.
Storage	Store at -20°C. Avoid freeze / thaw cycles.

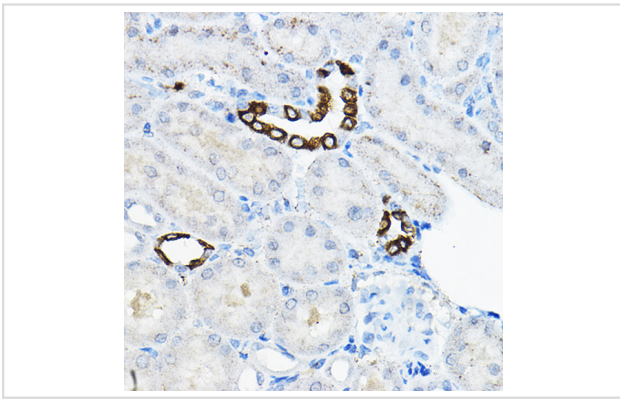
Application Details

WB □ 1:2000 - 1:5000 IHC □ 1:50 - 1:200

Images



Western blot analysis of extracts of 293T cells, using EVA1A antibody.



Immunohistochemistry of paraffin-embedded rat kidney using EVA1A Rabbit pAb.

Background

-

Note: This product is for in vitro research use only and is not intended for use in humans or animals.