

# TMBIM1 Rabbit Polyclonal Antibody

Catalog No: #55462

Package Size: #55462-1 50ul #55462-2 100ul

Orders: [order@signalwayantibody.com](mailto:order@signalwayantibody.com)Support: [tech@signalwayantibody.com](mailto:tech@signalwayantibody.com)

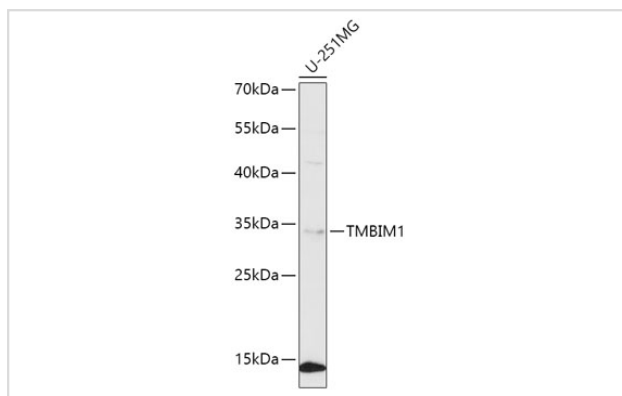
## Description

Product Name	TMBIM1 Rabbit Polyclonal Antibody
Host Species	Rabbit
Clonality	Polyclonal
Isotype	IgG
Purification	Affinity purification
Applications	WB,IF
Species Reactivity	Human,Mouse
Immunogen Description	A synthetic peptide of human TMBIM1 (NP_071435.2).
Other Names	TMBIM1;LFG3;MST100;MSTP100;PP1201;RECS1
Accession No.	Swiss Prot:Q969X1Gene ID:64114
Calculated MW	34kDa
SDS-PAGE MW	35kDa
Formulation	Buffer: PBS with 0.02% sodium azide,50% glycerol,pH7.3.
Storage	Store at -20°C. Avoid freeze / thaw cycles.

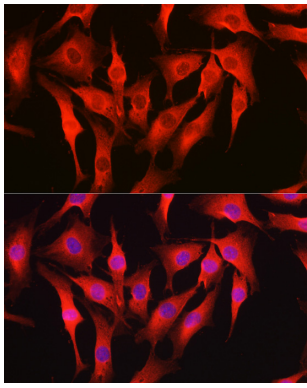
## Application Details

WB □ 1:500 - 1:2000 IF □ 1:50 - 1:200

## Images



Western blot analysis of extracts of U-251MG cells, using RECS1 antibody.



Immunofluorescence analysis of NIH-3T3 cells using TMBIM1 Rabbit pAb.

## Background

-

Note: This product is for in vitro research use only and is not intended for use in humans or animals.