

NINJ1 Polyclonal Antibody

Catalog No: #44007



Package Size: #44007-1 50ul #44007-2 100ul

Orders: order@signalwayantibody.com

Support: tech@signalwayantibody.com

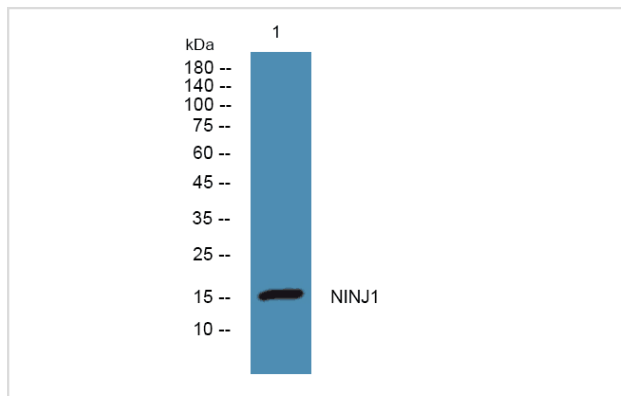
Description

| | |
|-----------------------|---|
| Product Name | NINJ1 Polyclonal Antibody |
| Host Species | Rabbit |
| Clonality | Polyclonal |
| Applications | WB |
| Species Reactivity | Human,Rat,Mouse |
| Specificity | NINJ1 Polyclonal Antibody detects endogenous levels of protein. |
| Immunogen Description | Synthesized peptide derived from part region of human protein |
| Accession No. | SwissProt:Q92982 |
| Concentration | 1mg/ml |
| Formulation | Liquid in PBS containing 50% glycerol, and 0.02% sodium azide. |
| Storage | Store at -20°C/1 year |

Application Details

WB 1:500-2000

Images



Western blot analysis of lysates from K562 cells, primary antibody was diluted at 1:1000, 4° over night

Note: This product is for in vitro research use only and is not intended for use in humans or animals.