

TFAM Rabbit Polyclonal Antibody

Catalog No: #29688



Package Size: #29688-1 50ul #29688-2 100ul

Orders: order@signalwayantibody.comSupport: tech@signalwayantibody.com

Description

Product Name	TFAM Rabbit Polyclonal Antibody
Host Species	Rabbit
Clonality	Polyclonal
Isotype	IgG
Purification	Affinity purification
Applications	WB IHC IF
Species Reactivity	Human,Rat,Mouse
Immunogen Description	Recombinant fusion protein of human TFAM (NP_003192.1).
Other Names	TFAM;MTDPS15;MTTF1;MTTFA;TCF6;TCF6L1;TCF6L2;TCF6L3
Accession No.	SwissProt:Q00059Gene ID:7019
Calculated MW	25kDa/29kDa
SDS-PAGE MW	25kDa
Formulation	PBS with 0.02% sodium azide,50% glycerol,pH7.3.
Storage	Store at -20°C. Avoid freeze / thaw cycles.

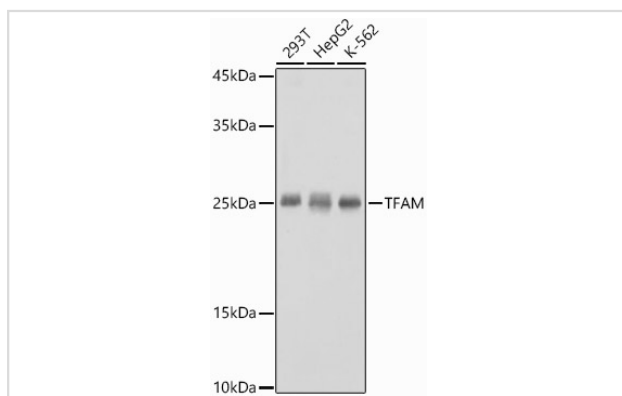
Application Details

WB 1:500 - 1:2000

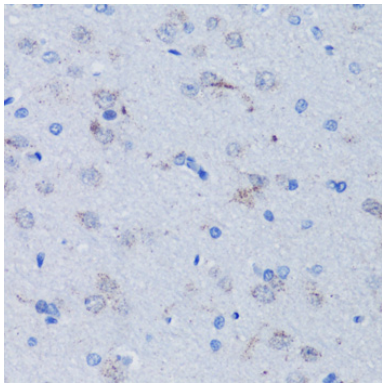
IHC 1:50 - 1:200

IF 1:50 - 1:200

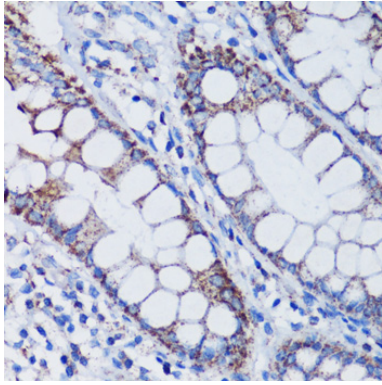
Images



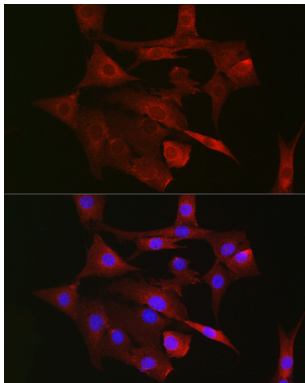
Western blot analysis of extracts of various cell lines, using TFAM antibody.



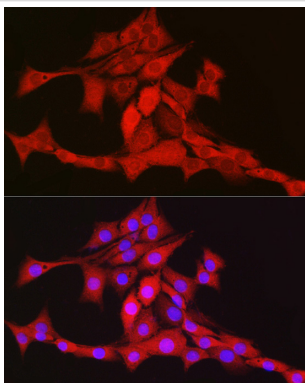
Immunohistochemistry of paraffin-embedded rat brain using TFAM antibody.



Immunohistochemistry of paraffin-embedded human colon using TFAM antibody.



Immunofluorescence analysis of NIH/3T3 cells using TFAM Rabbit pAb.



Immunofluorescence analysis of PC-12 cells using TFAM Rabbit pAb.

Background

This gene encodes a key mitochondrial transcription factor containing two high mobility group motifs. The encoded protein also functions in mitochondrial DNA replication and repair. Sequence polymorphisms in this gene are associated with Alzheimer's and Parkinson's diseases. There are pseudogenes for this gene on chromosomes 6, 7, and 11. Alternative splicing results in multiple transcript variants.

Note: This product is for in vitro research use only and is not intended for use in humans or animals.