

# D1DR Polyclonal Antibody

Catalog No: #44220

Package Size: #44220-1 50ul #44220-2 100ul

Orders: [order@signalwayantibody.com](mailto:order@signalwayantibody.com)Support: [tech@signalwayantibody.com](mailto:tech@signalwayantibody.com)

## Description

Product Name	D1DR Polyclonal Antibody
Host Species	Rabbit
Clonality	Polyclonal
Isotype	IgG
Applications	WB;IHC-p;IF/ICC;ELISA
Species Reactivity	Human;Mouse;Rat
Specificity	D1DR Polyclonal Antibody detects endogenous levels of D1DR protein.
Immunogen Description	The antiserum was produced against synthesized peptide derived from human DRD1.
Accession No.	Swiss-Prot#: P21728 NCBI Gene ID:1812
Concentration	1mg/mL
Formulation	Liquid in PBS containing 50% glycerol, 0.5% BSA and 0.02% sodium azide.
Storage	Store at -20°C/1 year

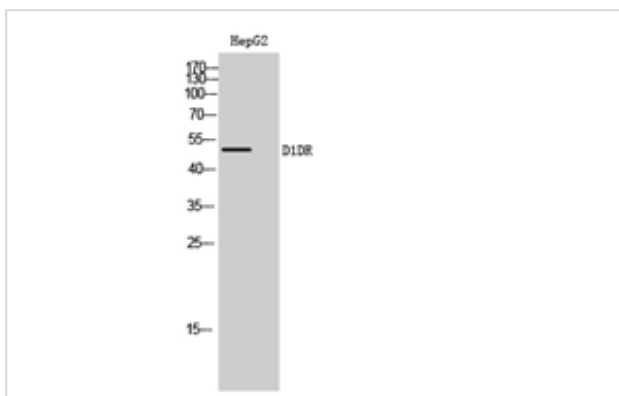
## Application Details

Western Blot: 1/500 - 1/2000

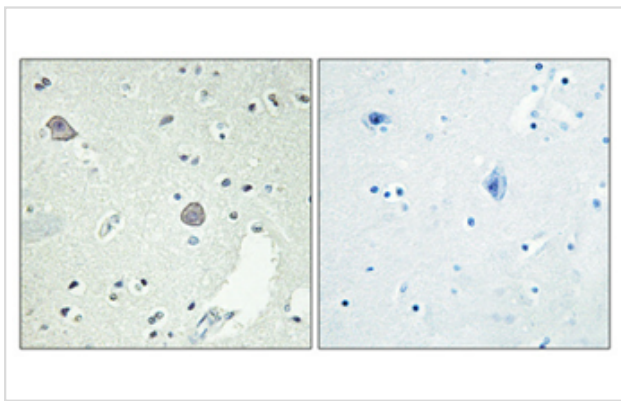
Immunohistochemistry: 1/100 - 1/300

Immunofluorescence: 1/200 - 1/1000. ELISA: 1/5000

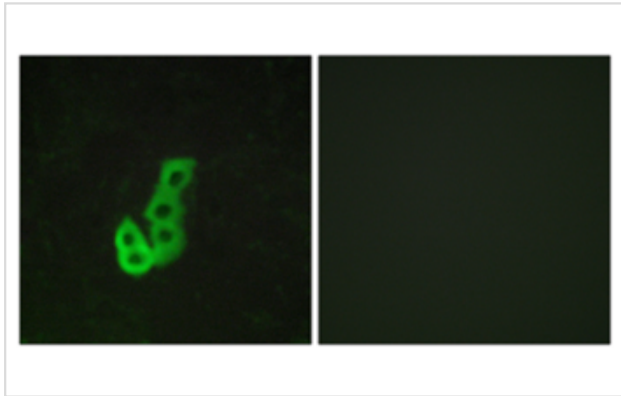
## Images



Western blot analysis of lysates from HT-29 cells, using ADRB1 Antibody.



Immunohistochemical analysis of paraffin-embedded Human brain.



Immunofluorescence analysis of MCF7 cells, using DRD1 Antibody.

---

Note: This product is for in vitro research use only and is not intended for use in humans or animals.