

LATS1/2 (phospho-Ser909) rabbit pAb

Catalog No: #44106

Package Size: #44106-1 50ul #44106-2 100ul

Orders: order@signalwayantibody.com

Support: tech@signalwayantibody.com

Description

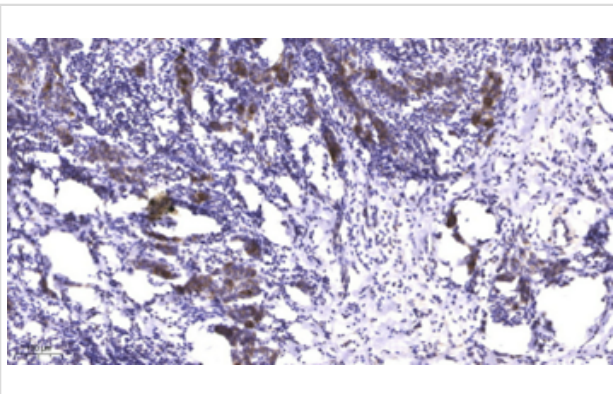
Product Name	LATS1/2 (phospho-Ser909) rabbit pAb
Host Species	Rabbit
Clonality	Polyclonal
Isotype	IgG
Applications	WB;IHC-p;ELISA
Species Reactivity	Human;Mouse;Rat
Specificity	This antibody detects endogenous levels of Human LATS1/2 (phospho-Ser909)
Immunogen Description	Synthesized phosho peptide around human LATS1/2 (Ser909)
Accession No.	Swiss-Prot#: O95835 NCBI Gene ID:9113
Concentration	1mg/mL
Formulation	Liquid in PBS containing 50% glycerol, 0.5% BSA and 0.02% sodium azide.
Storage	Store at -20°C/1 year

Application Details

WB 1:500-2000

IHC-p 1:50-300; ELISA 2000-20000

Images



Immunohistochemical analysis of paraffin-embedded human Breast cancer.



Western Blot analysis of Hela treated or untreated by LPS lysis, using primary antibody at 1:1000 dilution.

Note: This product is for in vitro research use only and is not intended for use in humans or animals.