

MLKL (phospho S358) Polyclonal Antibody

Catalog No: #44213



Package Size: #44213-1 50ul #44213-2 100ul

Orders: order@signalwayantibody.comSupport: tech@signalwayantibody.com

Description

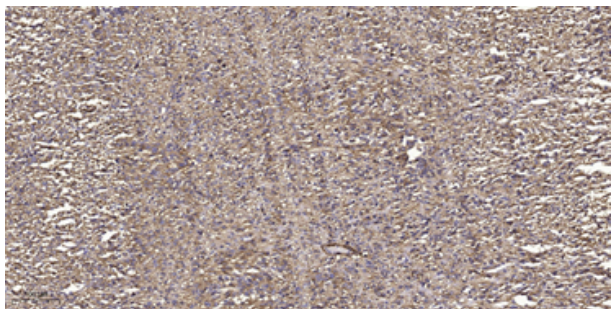
Product Name	MLKL (phospho S358) Polyclonal Antibody
Host Species	Rabbit
Clonality	Polyclonal
Isotype	IgG
Purification	The antibody was affinity-purified from rabbit serum by affinity-chromatography using specific immunogen.
Applications	IHC-p;IF/ICC;WB
Species Reactivity	Human
Specificity	This antibody detects endogenous phospho levels of MLKL (phospho S358) at Human, Mouse, Rat
Immunogen Description	Synthesized peptide derived from human MLKL (phospho S358)
Accession No.	Swiss-Prot#: Q8NB16; NCBI Gene#: 197259;
Calculated MW	55kD
Concentration	1 mg/ml
Formulation	Liquid in PBS containing 50% glycerol, 0.5% BSA and 0.02% sodium azide.
Storage	Store at -20°C/1 year

Application Details

IHC-p 1:100-500;IF/ICC 1:100-500;

WB 1:500-2000

Images



Immunohistochemical analysis of paraffin-embedded human small intestinal carcinoma tissue.

Note: This product is for in vitro research use only and is not intended for use in humans or animals.