

eIF2 alpha (Phospho-Ser51) Rabbit mAb

Catalog No: #14123



Package Size: #14123-1 50ul #14123-2 100ul

Orders: order@signalwayantibody.com

Support: tech@signalwayantibody.com

Description

Product Name	eIF2 alpha (Phospho-Ser51) Rabbit mAb
Host Species	Rabbit
Clonality	Monoclonal
Isotype	Rabbit IgG
Purification	Affinity-chromatography
Applications	WB IHC ICC/IF FC
Species Reactivity	Human Mouse Rat
Specificity	Phospho-eIF2 alpha (Ser51) Antibody detects endogenous levels of total Phospho-eIF2 alpha (Ser51)
Immunogen Description	A synthesized peptide derived from human Phospho-eIF2 alpha (Ser51)
Other Names	EIF-2; eIF-2-alpha; eIF-2A; eIF-2alpha; EIF2; EIF2A; EIF2S1; IF2A;
Accession No.	Uniprot:P05198
Calculated MW	36kDa
Formulation	Rabbit IgG in phosphate buffered saline , pH 7.4, 150mM NaCl, 0.02% sodium azide and 50% glycerol.
Storage	Store at +4°C short term. Store at -20°C long term. Avoid freeze / thaw cycle.

Application Details

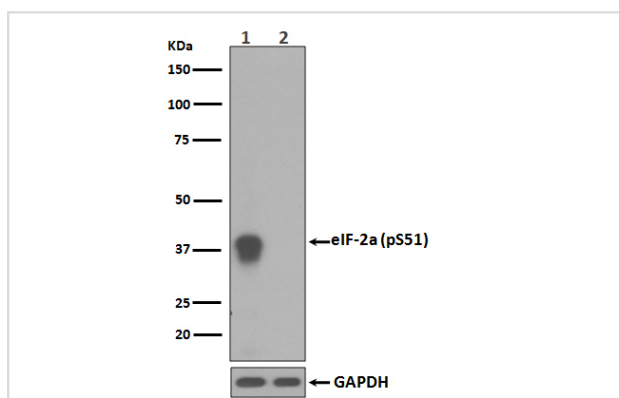
WB:1:500~1:2000

IHC:1:50~1:200

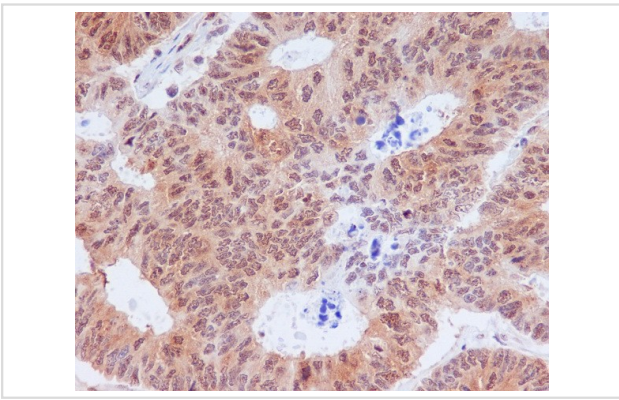
ICC/IF:1:50~1:200

FC:1:40

Images



Western blot analysis of Phospho-eIF2 alpha (Ser51) expression in (1)HeLa cell lysates treated with Calyculin A;(2) Untreated HeLa cell lysates.



Immunohistochemical analysis of paraffin-embedded human colon cancer, using Phospho-eIF2 alpha (Ser51) Antibody.

Product Description

eIF2A a translation initiation factor that functions in the early steps of protein synthesis by forming a ternary complex with GTP and initiator tRNA. This complex binds to a 40s ribosomal subunit, followed by mRNA binding to form a 43S preinitiation complex.

Note: This product is for in vitro research use only and is not intended for use in humans or animals.