

## alpha Synuclein (Phospho-Ser129) Rabbit mAb

Catalog No: #14141



Package Size: #14141-1 50ul #14141-2 100ul

Orders: order@signalwayantibody.com

Support: tech@signalwayantibody.com

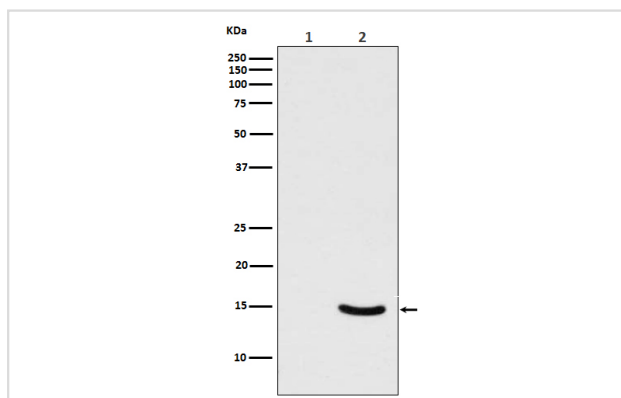
## Description

|                       |   |
|-----------------------|---|
| Product Name          | alpha Synuclein (Phospho-Ser129) Rabbit mAb   |
| Host Species          | Rabbit  |
| Clonality             | Monoclonal  |
| Isotype               | Rabbit IgG  |
| Purification          | Affinity-chromatography   |
| Applications          | WB IHC ICC/IF   |
| Species Reactivity    | Human   |
| Specificity           | Phospho-alpha Synuclein (S129) Antibody detects endogenous levels of total Phospho-alpha Synuclein (S129) |
| Immunogen Description | A synthesized peptide derived from human Phospho-alpha Synuclein (S129)                                   |
| Other Names           | Alpha-synuclein; NACP; non A-beta component of AD amyloid; PARK1; PARK4; PD1; SNCA;                       |
| Accession No.         | Uniprot:P37840  |
| Calculated MW         | 18kDa   |
| Formulation           | Rabbit IgG in phosphate buffered saline , pH 7.4, 150mM NaCl, 0.02% sodium azide and 50% glycerol.        |
| Storage               | Store at +4°C short term. Store at -20°C long term. Avoid freeze / thaw cycle.                            |

## Application Details

WB:1:500~1:2000IHC:1:50~1:200ICC/IF:1:50~1:200

## Images



Western blot analysis of Phospho-alpha Synuclein (Ser129) expression in (1) 293T cell lysate; (2) 293T cell lysate transfected with Polo-Like Kinase 2 and alpha Synuclein.

## Product Description

SNCA a member of the synuclein family. Abundantly expressed in the brain. Inhibits phospholipase D2 selectively. May integrate presynaptic signaling and membrane trafficking. Implicated in the pathogenesis of Parkinson's disease. A major component of amyloid plaques in the brains of patients with Alzheimer's disease. Two alternatively spliced isoforms transcripts have been identified.

---

Note: This product is for in vitro research use only and is not intended for use in humans or animals.