

## p53 (Phospho-Ser392) Rabbit mAb

Catalog No: #14142



Package Size: #14142-1 50ul #14142-2 100ul

Orders: order@signalwayantibody.com

Support: tech@signalwayantibody.com

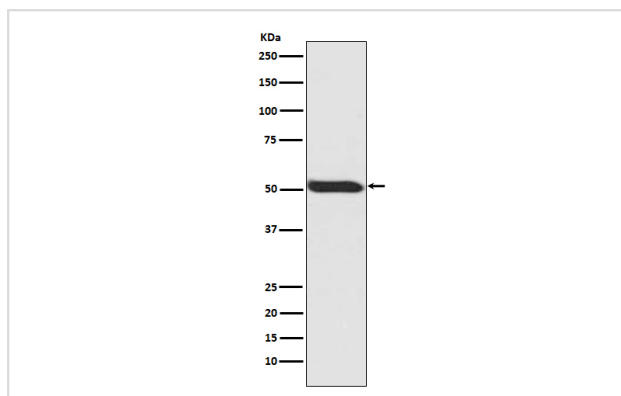
## Description

Product Name	p53 (Phospho-Ser392) Rabbit mAb
Host Species	Rabbit
Clonality	Monoclonal
Isotype	Rabbit IgG
Purification	Affinity-chromatography
Applications	WB IHC ICC/IF IP
Species Reactivity	Human Mouse Rat
Specificity	Phospho-p53 (S392) Antibody detects endogenous levels of total Phospho-p53 (S392)
Immunogen Description	A synthesized peptide derived from human Phospho-p53 (S392)
Other Names	Antigen NY-CO-13, Cellular tumor antigen p53, Phosphoprotein p53, TP53, Tumor suppressor p53
Accession No.	Uniprot:P04637
Calculated MW	53kDa
Formulation	Rabbit IgG in phosphate buffered saline , pH 7.4, 150mM NaCl, 0.02% sodium azide and 50% glycerol.
Storage	Store at +4°C short term. Store at -20°C long term. Avoid freeze / thaw cycle.

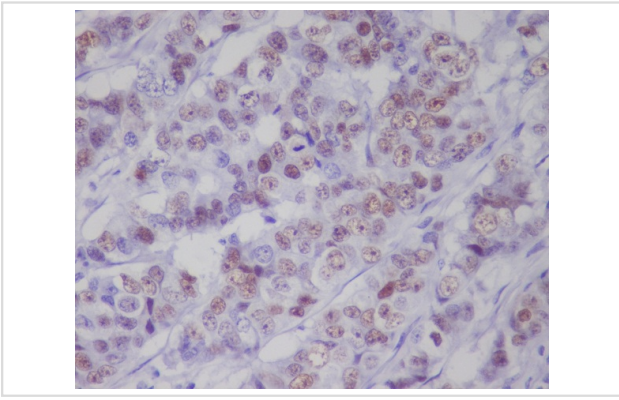
## Application Details

WB:1:500~1:2000IHC:1:50~1:200ICC/IF:1:50~1:200IP:1:50

## Images



Western blot analysis of Phospho-p53 (Ser392) expression in HEK293 whole cell lysate.



Immunohistochemical analysis of paraffin-embedded human breast, using Phospho-p53 (S392) Antibody.

## Product Description

Tumor protein p53, a nuclear protein, plays an essential role in the regulation of cell cycle, specifically in the transition from G0 to G1. It is found in very low levels in normal cells, however, in a variety of transformed cell lines, it is expressed in high amounts, and believed to contribute to transformation and malignancy. p53 is a DNA-binding protein containing DNA-binding, oligomerization and transcription activation domains.

Note: This product is for in vitro research use only and is not intended for use in humans or animals.