

## alpha Tubulin (Phospho-Tyr272) Rabbit mAb

Catalog No: #14143



Package Size: #14143-1 50ul #14143-2 100ul

Orders: order@signalwayantibody.com

Support: tech@signalwayantibody.com

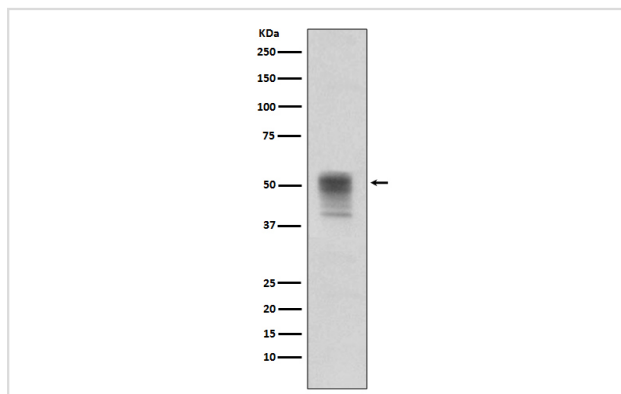
## Description

Product Name	alpha Tubulin (Phospho-Tyr272) Rabbit mAb
Host Species	Rabbit
Clonality	Monoclonal
Isotype	Rabbit IgG
Purification	Affinity-chromatography
Applications	WB ICC/IF
Species Reactivity	Human
Specificity	Phospho-alpha Tubulin (Y272) Antibody detects endogenous levels of total Phospho-alpha Tubulin (Y272)
Immunogen Description	A synthesized peptide derived from human Phospho-alpha Tubulin (Y272)
Other Names	Alpha-tubulin 3; B-ALPHA-1; FLJ25113; hum-a-tub1; hum-a-tub2; LIS3; TBA1A; TUBA1A; TUBA3; Tubulin alpha-1A chain; Tubulin alpha-3 chain; Tubulin B-alpha-1; tubulin, alpha 1a; tubulin, alpha 3; tubulin, alpha, brain-specific
Accession No.	Uniprot:P68363
Calculated MW	54kDa
Formulation	Rabbit IgG in phosphate buffered saline , pH 7.4, 150mM NaCl, 0.02% sodium azide and 50% glycerol.
Storage	Store at +4°C short term. Store at -20°C long term. Avoid freeze / thaw cycle.

## Application Details

WB:1:500~1:2000 ICC/IF:1:50~1:200

## Images



Western blot analysis on Jurkat cell lysates treated with pervanadate using alpha Tubulin (phospho Y272) Antibody.

## Product Description

TUBA1A Tubulin is the major constituent of microtubules. It binds two moles of GTP, one at an exchangeable site on the beta chain and one at a non-exchangeable site on the alpha-chain.

---

Note: This product is for in vitro research use only and is not intended for use in humans or animals.