

EGFR (Phospho-Tyr1068) Rabbit mAb

Catalog No: #14144



Package Size: #14144-1 50ul #14144-2 100ul

Orders: order@signalwayantibody.comSupport: tech@signalwayantibody.com

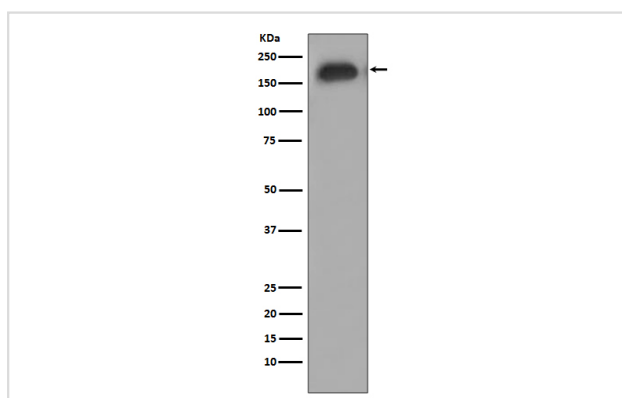
Description

Product Name	EGFR (Phospho-Tyr1068) Rabbit mAb
Host Species	Rabbit
Clonality	Monoclonal
Isotype	Rabbit IgG
Purification	Affinity-chromatography
Applications	WB IHC ICC/IF
Species Reactivity	Human Mouse
Specificity	Phospho-EGFR (Y1068) Antibody detects endogenous levels of total Phospho-EGFR (Y1068)
Immunogen Description	A synthesized peptide derived from human Phospho-EGFR (Y1068)
Other Names	ERBB1, Epidermal growth factor receptor precursor; Receptor protein-tyrosine kinase ErbB-1; kinase EGFR; HER1; EGFR; SA7; NISBD2;
Accession No.	Uniprot:P00533
Calculated MW	170kDa
Formulation	Rabbit IgG in phosphate buffered saline , pH 7.4, 150mM NaCl, 0.02% sodium azide and 50% glycerol.
Storage	Store at +4°C short term. Store at -20°C long term. Avoid freeze / thaw cycle.

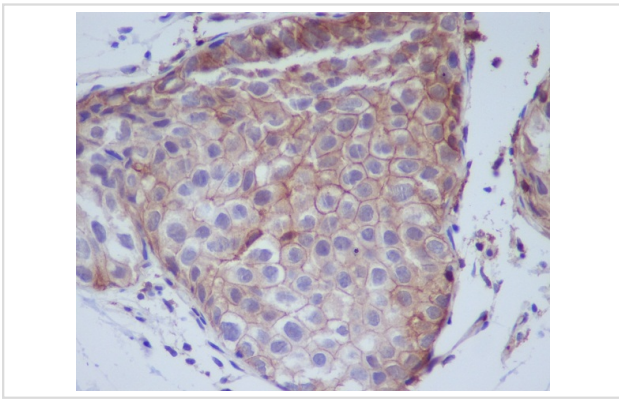
Application Details

WB: 1:500~1:2000 IHC: 1:50~1:200 ICC/IF: 1:50~1:200

Images



Western blot analysis of EGFR phosphorylation expression in A431 cell treated with EGF.



Immunohistochemical analysis of paraffin-embedded human breast cancer, using Phospho-EGFR (Y1068) Antibody .

Product Description

Receptor for epidermal growth factor (EGF) and related growth factors including TGF-alpha, amphiregulin, betacellulin, heparin-binding EGF-like growth factor, GP30 and vaccinia virus growth factor. Is involved in the control of cell growth and differentiation. . A single-pass transmembrane tyrosine kinase. Ligand binding to this receptor results in receptor dimerization, autophosphorylation (in trans), activation of various downstream signaling molecules and lysosomal degradation. Can be phosphorylated and activated by Src.

Note: This product is for in vitro research use only and is not intended for use in humans or animals.