

## S6K1 (Phospho-Thr421/Ser424) Rabbit mAb

Catalog No: #14148



Package Size: #14148-1 50ul #14148-2 100ul

Orders: order@signalwayantibody.com

Support: tech@signalwayantibody.com

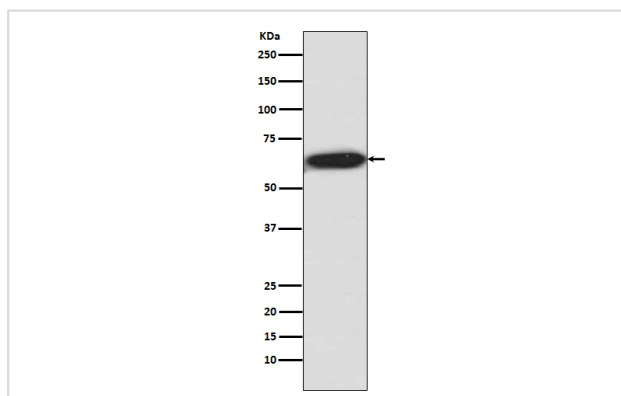
## Description

Product Name	S6K1 (Phospho-Thr421/Ser424) Rabbit mAb
Host Species	Rabbit
Clonality	Monoclonal
Isotype	Rabbit IgG
Purification	Affinity-chromatography
Applications	WB IP
Species Reactivity	Human Rat
Specificity	Phospho-S6K1 (T421 + S424) Antibody detects endogenous levels of total Phospho-S6K1 (T421 + S424)
Immunogen Description	A synthesized peptide derived from human Phospho-S6K1 (T421 + S424)
Other Names	EC 2.7.11.1, KS6B1, P70-S6K, RPS6KB1, Ribosomal protein S6 kinase, Ribosomal protein S6 kinase, 70kDa, polypeptide 1, S6K, kinase p70S6K, p70-S6K
Accession No.	Uniprot:P23443
Calculated MW	70kDa
Formulation	Rabbit IgG in phosphate buffered saline , pH 7.4, 150mM NaCl, 0.02% sodium azide and 50% glycerol.
Storage	Store at +4°C short term. Store at -20°C long term. Avoid freeze / thaw cycle.

## Application Details

WB: 1:500~1:2000 IP: 1:30

## Images



Western blot analysis of SK61 phosphorylation expression in HEK293 cell lysate.

## Product Description

This gene encodes a member of the RSK (ribosomal S6 kinase) family of serine/threonine kinases. This kinase contains 2 non-identical kinase catalytic domains and phosphorylates several residues of the S6 ribosomal protein.

---

Note: This product is for in vitro research use only and is not intended for use in humans or animals.