

STAT3 (Phospho-Ser727) Rabbit mAb

Catalog No: #14152



Package Size: #14152-1 50ul #14152-2 100ul

Orders: order@signalwayantibody.com

Support: tech@signalwayantibody.com

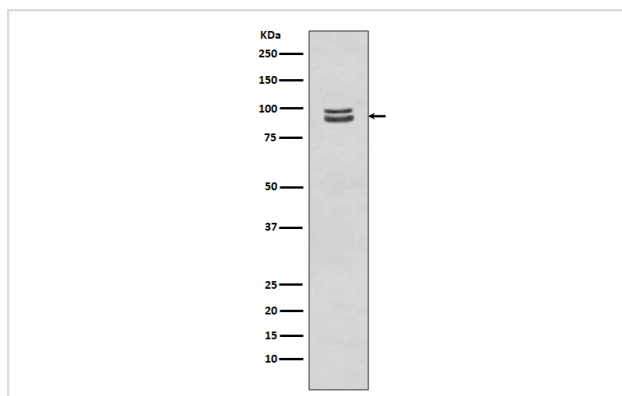
Description

Product Name	STAT3 (Phospho-Ser727) Rabbit mAb
Host Species	Rabbit
Clonality	Monoclonal
Isotype	Rabbit IgG
Purification	Affinity-chromatography
Applications	WB IHC ICC/IF IP
Species Reactivity	Human Mouse Rat
Specificity	Phospho-STAT3 (S727) Antibody detects endogenous levels of total Phospho-STAT3 (S727)
Immunogen Description	A synthesized peptide derived from human Phospho-STAT3 (S727)
Other Names	APRF;Acute-phase response factor;Signal transducer and activator of transcription 3;Stat3;
Accession No.	Uniprot:P40763
Calculated MW	98kDa
Formulation	Rabbit IgG in phosphate buffered saline , pH 7.4, 150mM NaCl, 0.02% sodium azide and 50% glycerol.
Storage	Store at +4°C short term. Store at -20°C long term. Avoid freeze / thaw cycle.

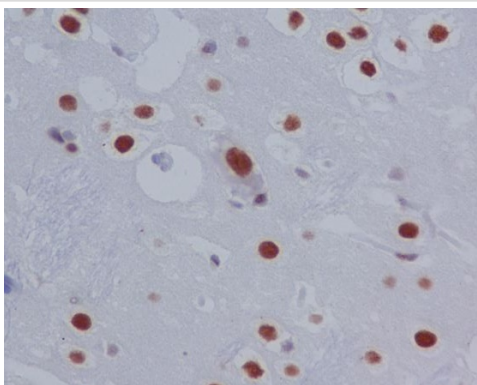
Application Details

WB:1:1000~1:2000IHC:1:50~1:200ICC/IF:1:50~1:200IP:1:50

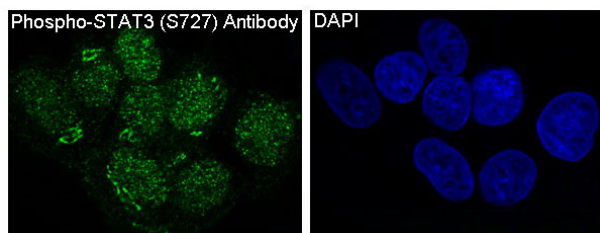
Images



Western blot analysis of Phospho-STAT3 (S727) expression in A431 cell lysate treated with EGF.



Immunohistochemical analysis of paraffin-embedded rat brain, using Phospho-STAT3 (S727) Antibody.



Immunofluorescent analysis of A431 cells treated with EGF, using Phospho-STAT3 (S727) Antibody .

Product Description

Signal transducer and transcription activator that mediates cellular responses to interleukins, KITLG/SCF and other growth factors. May mediate cellular responses to activated FGFR1, FGFR2, FGFR3 and FGFR4. Binds to the interleukin-6 (IL-6)-responsive elements identified in the promoters of various acute-phase protein genes. Activated by IL31 through IL31RA.

Note: This product is for in vitro research use only and is not intended for use in humans or animals.