

Glycogen synthase 1 (Phospho-Ser641) Rabbit mAb

Catalog No: #14158



Package Size: #14158-1 50ul #14158-2 100ul

Orders: order@signalwayantibody.com

Support: tech@signalwayantibody.com

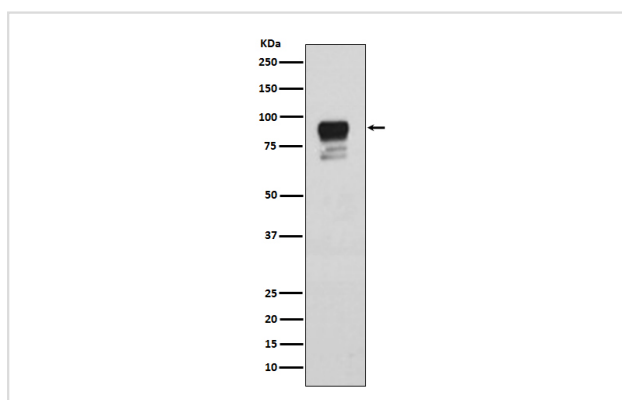
Description

Product Name	Glycogen synthase 1 (Phospho-Ser641) Rabbit mAb
Host Species	Rabbit
Clonality	Monoclonal
Isotype	Rabbit IgG
Purification	Affinity-chromatography
Applications	WB IHC ICC/IF IP
Species Reactivity	Human Mouse
Specificity	Phospho-Glycogen synthase 1 (S641) Antibody detects endogenous levels of total Phospho-Glycogen synthase 1 (S641)
Immunogen Description	A synthesized peptide derived from human Phospho-Glycogen synthase 1 (S641)
Other Names	glycogen [starch] synthase, muscle; glycogen synthase, muscle; GYS;
Accession No.	Uniprot:P13807
Calculated MW	85kDa
Formulation	Rabbit IgG in phosphate buffered saline , pH 7.4, 150mM NaCl, 0.02% sodium azide and 50% glycerol.
Storage	Store at +4°C short term. Store at -20°C long term. Avoid freeze / thaw cycle.

Application Details

WB:1:1000~1:2000IHC:1:50~1:200ICC/IF:1:50~1:200IP:1:50

Images



Western blot analysis of Phospho-Glycogen synthase 1 (S641) expression in HeLa cell lysate.

Product Description

Transfers the glycosyl residue from UDP-Glc to the non-reducing end of alpha-1,4-glucan. Allosteric activation by glucose-6-phosphate. Phosphorylation reduces the activity towards UDP-glucose. When in the non-phosphorylated state, glycogen synthase does not require glucose-6-phosphate as an allosteric activator; when phosphorylated it does.

Note: This product is for in vitro research use only and is not intended for use in humans or animals.