

SHP2 (Phospho-Tyr542) Rabbit mAb

Catalog No: #14185



Package Size: #14185-1 50ul #14185-2 100ul

Orders: order@signalwayantibody.com

Support: tech@signalwayantibody.com

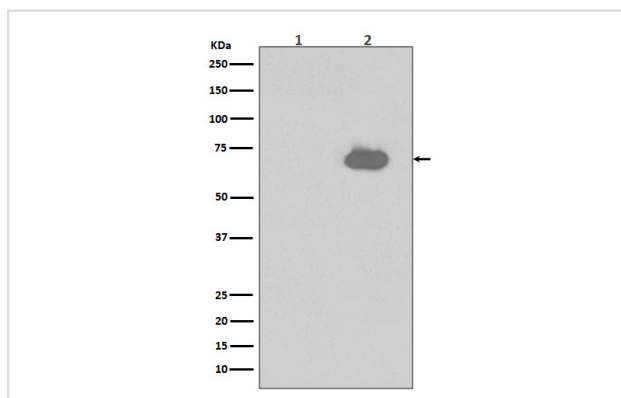
Description

Product Name	SHP2 (Phospho-Tyr542) Rabbit mAb
Host Species	Rabbit
Clonality	Monoclonal
Isotype	Rabbit IgG
Purification	Affinity-chromatography
Applications	WB ICC/IF IP
Species Reactivity	Human Mouse
Specificity	Phospho-SHP2 (Y542) Antibody detects endogenous levels of Phospho-SHP2 (Y542)
Immunogen Description	A synthesized peptide derived from human Phospho-SHP2 (Y542)
Other Names	BPTP3; CFC; MGC14433; NS1; PTN11; PTP-1D; PTP-2C; PTP2C; PTPN11; SH-PTP2; SH-PTP3; SHP-2; Shp2; SHPTP2;
Accession No.	Uniprot:Q06124
Calculated MW	68kDa
Formulation	Rabbit IgG in phosphate buffered saline , pH 7.4, 150mM NaCl, 0.02% sodium azide and 50% glycerol.
Storage	Store at +4°C short term. Store at -20°C long term. Avoid freeze / thaw cycle.

Application Details

WB: 1:500~1:2000 ICC/IF: 1:50~1:200 IP: 1:50

Images



Western blot analysis of Phospho-SHP2 (Y542) expression in (1) NIH/3T3 cell lysates; (2) NIH/3T3 cell lysates treated with PDGF.

Product Description

SHP-2 is a SH2-containing ubiquitously expressed tyrosine-specific protein phosphatase. It participates in signaling events downstream of receptors for growth factors, cytokines, hormones, antigens and extracellular matrices in the control of cell growth, differentiation, migration, and death.

Note: This product is for in vitro research use only and is not intended for use in humans or animals.