

Tau (Phospho-Ser396) Rabbit mAb

Catalog No: #14186



Package Size: #14186-1 50ul #14186-2 100ul

Orders: order@signalwayantibody.comSupport: tech@signalwayantibody.com

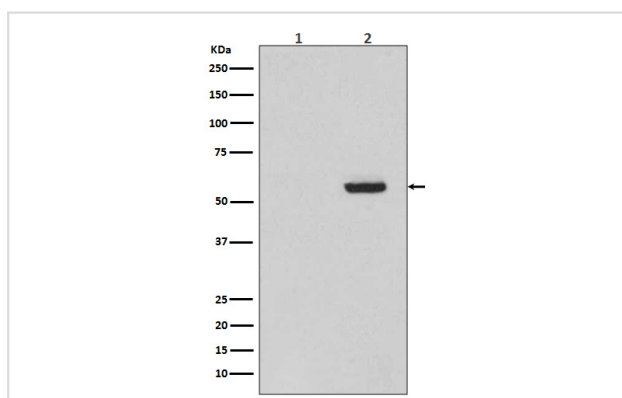
Description

Product Name	Tau (Phospho-Ser396) Rabbit mAb
Host Species	Rabbit
Clonality	Monoclonal
Isotype	Rabbit IgG
Purification	Affinity-chromatography
Applications	WB IHC
Species Reactivity	Human Mouse Rat
Specificity	Phospho-Tau (S396) Antibody detects endogenous levels of Phospho-Tau (S396)
Immunogen Description	A synthesized peptide derived from human Phospho-Tau (S396)
Other Names	MAPT; Microtubule-associated protein tau; MTBT1; Neurofibrillary tangle protein; Paired helical filament-tau; PHF-tau;
Accession No.	Uniprot:P10636
Calculated MW	50-80kDa
Formulation	Rabbit IgG in phosphate buffered saline , pH 7.4, 150mM NaCl, 0.02% sodium azide and 50% glycerol.
Storage	Store at +4°C short term. Store at -20°C long term. Avoid freeze / thaw cycle.

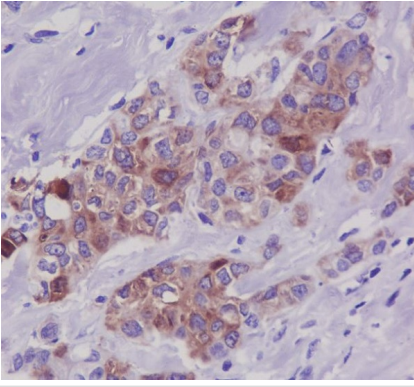
Application Details

WB:1:10000~1:20000IHC1:100~1:500

Images



Western blot analysis of Phospho-Tau (S396) expression in (1) SH-SY5Y cell lysate treated with AP; (2) SH-SY5Y cell lysate.



Immunohistochemical analysis of paraffin-embedded human breast carcinoma, using Phospho-Tau (S396) Antibody.

Product Description

Tau is a heterogeneous microtubule-associated protein that promotes and stabilizes microtubule assembly, especially in axons. Six isoforms with different amino-terminal inserts and different numbers of tandem repeats near the carboxy-terminus have been identified, and tau is hyperphosphorylated at approximately 25 sites by ERK, GSK-3 and CDK5 . Phosphorylation decreases the ability of tau to bind to microtubules. Neurofibrillary tangles are a major hallmark of Alzheimer's disease and these tangles are bundles of paired helical filaments composed of hyperphosphorylated tau.

Note: This product is for in vitro research use only and is not intended for use in humans or animals.