

RPA2 (Phospho-Thr21) Rabbit mAb

Catalog No: #14189

Package Size: #14189-1 50ul #14189-2 100ul

Orders: order@signalwayantibody.comSupport: tech@signalwayantibody.com

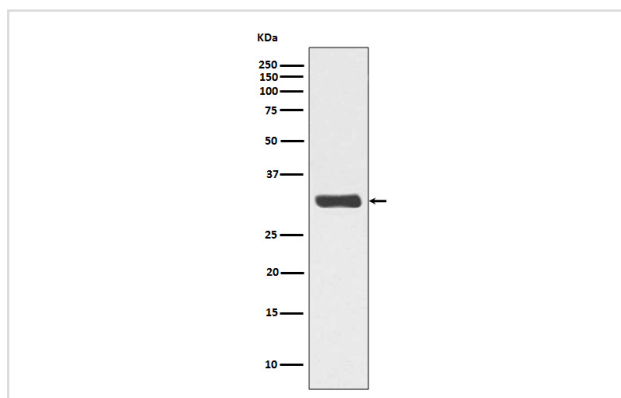
Description

| | |
|-----------------------|---|
| Product Name | RPA2 (Phospho-Thr21) Rabbit mAb |
| Host Species | Rabbit |
| Clonality | Monoclonal |
| Isotype | Rabbit IgG |
| Purification | Affinity-chromatography |
| Applications | WB IP |
| Species Reactivity | Human Mouse Rat |
| Specificity | Phospho-RPA2 (T21) Antibody detects endogenous levels of Phospho-RPA2 (T21) |
| Immunogen Description | A synthesized peptide derived from human Phospho-RPA2 (T21) |
| Other Names | REPA2; RF-A; RP-A; RPA2; RPA32; replication factor-A protein 2; replication protein A 32 kDa subunit; replication protein A2; |
| Accession No. | Uniprot:P15927 |
| Calculated MW | 32kDa |
| Formulation | Rabbit IgG in phosphate buffered saline , pH 7.4, 150mM NaCl, 0.02% sodium azide and 50% glycerol. |
| Storage | Store at +4°C short term. Store at -20°C long term. Avoid freeze / thaw cycle. |

Application Details

WB:1:5000~1:10000IP:1:20

Images



Western blot analysis of Phospho-RPA2 (T21) expression in HeLa cell lysate treated with Calyculin A.

Product Description

As part of the heterotrimeric replication protein A complex (RPA/RP-A), binds and stabilizes single-stranded DNA intermediates, that form during DNA replication or upon DNA stress. It prevents their reannealing and in parallel, recruits and activates different proteins and complexes involved in DNA metabolism. Thereby, it plays an essential role both in DNA replication and the cellular response to DNA damage. In the cellular response to DNA damage, the RPA complex controls DNA repair and DNA damage checkpoint activation.

Note: This product is for in vitro research use only and is not intended for use in humans or animals.