

## STAT1 (Phospho-Ser727) Rabbit mAb

Catalog No: #14197



Package Size: #14197-1 50ul #14197-2 100ul

Orders: [order@signalwayantibody.com](mailto:order@signalwayantibody.com)Support: [tech@signalwayantibody.com](mailto:tech@signalwayantibody.com)

## Description

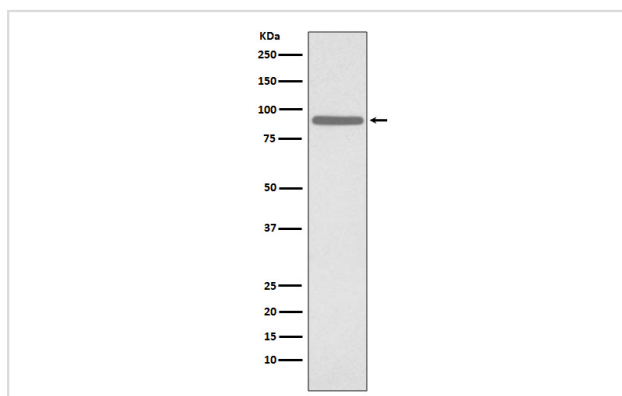
Product Name	STAT1 (Phospho-Ser727) Rabbit mAb
Host Species	Rabbit
Clonality	Monoclonal
Isotype	Rabbit IgG
Purification	Affinity-chromatography
Applications	WB IHC
Species Reactivity	Human Mouse Rat
Specificity	Phospho-STAT1 (S727) Antibody detects endogenous levels of Phospho-STAT1 (S727)
Immunogen Description	A synthesized peptide derived from human Phospho-STAT1 (S727)
Other Names	Signal transducer and activator of transcription 1; Transcription factor ISGF-3 components p91/p84; STAT1; CANDF7; ISGF3;
Accession No.	Uniprot:P42224
Calculated MW	87kDa
Formulation	Rabbit IgG in phosphate buffered saline , pH 7.4, 150mM NaCl, 0.02% sodium azide and 50% glycerol.
Storage	Store at +4°C short term. Store at -20°C long term. Avoid freeze / thaw cycle.

## Application Details

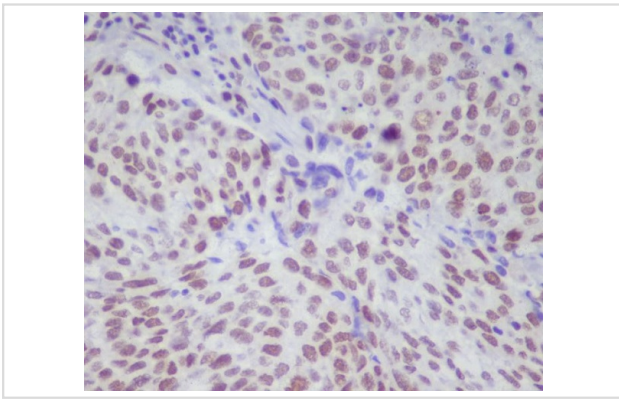
WB: 1:1000~1:2000

IHC: 1:50~1:200

## Images



Western blot analysis of Phospho-STAT1 (S727) expression in HeLa cell lysate treated with etoposide.



Immunohistochemical analysis of paraffin-embedded human lung cancer, using Phospho-STAT1 (S727) Antibody.

## Product Description

The protein encoded by this gene is a member of the STAT protein family. In response to cytokines and growth factors, STAT family members are phosphorylated by the receptor associated kinases, and then form homo- or heterodimers that translocate to the cell nucleus where they act as transcription activators.

Note: This product is for in vitro research use only and is not intended for use in humans or animals.