

CDK2 (Phospho-Tyr15) Rabbit mAb

Catalog No: #14200



Package Size: #14200-1 50ul #14200-2 100ul

Orders: order@signalwayantibody.com

Support: tech@signalwayantibody.com

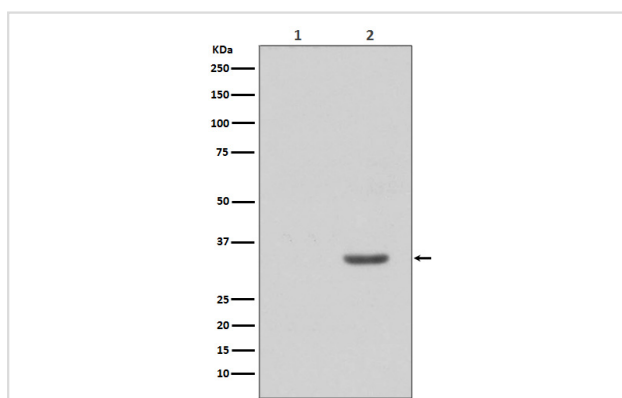
Description

Product Name	CDK2 (Phospho-Tyr15) Rabbit mAb
Host Species	Rabbit
Clonality	Monoclonal
Isotype	Rabbit IgG
Purification	Affinity-chromatography
Applications	WB IHC IP
Species Reactivity	Human Mouse Rat
Specificity	Phospho-CDK2 (Y15) Antibody detects endogenous levels of Phospho-CDK2 (Y15)
Immunogen Description	A synthesized peptide derived from human CDK2
Other Names	Cdc2 related protein kinase; Cyclin-dependent kinase 2; CDC28; Cell division protein kinase 2; p33 protein kinase; CDK2; CDKN2; CDC2A;
Accession No.	Uniprot:P24941
Calculated MW	34kDa
Formulation	Rabbit IgG in phosphate buffered saline , pH 7.4, 150mM NaCl, 0.02% sodium azide and 50% glycerol.
Storage	Store at +4°C short term. Store at -20°C long term. Avoid freeze / thaw cycle.

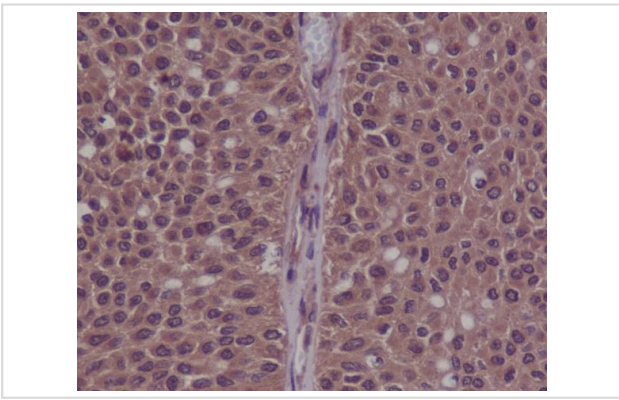
Application Details

WB:1:1000~1:2000IHC:1:50~1:200IP:1:50

Images



Western blot analysis of Phospho-CDK2 (Y15) expression in (1) HeLa treated with AP; (2) HeLa cell lysate.



Immunohistochemical analysis of paraffin-embedded human bladder cancer, using Phospho-CDK2 (Y15) Antibody.

Product Description

CDK2 is an important component of the cell cycle machinery. Like p34cdc2, kinase activity is regulated by phosphorylation state as well as association with a cyclin subunit and a CDK inhibitor. This protein can be regulated by the regulatory subunits of the complex including cyclin A or E, CDK inhibitor p21Cip1 (CDKN1A) and p27Kip1 (CDKN1B).

Note: This product is for in vitro research use only and is not intended for use in humans or animals.