

PTEN (Phospho-Ser380) Rabbit mAb

Catalog No: #14207

Package Size: #14207-1 50ul #14207-2 100ul

Orders: order@signalwayantibody.com

Support: tech@signalwayantibody.com

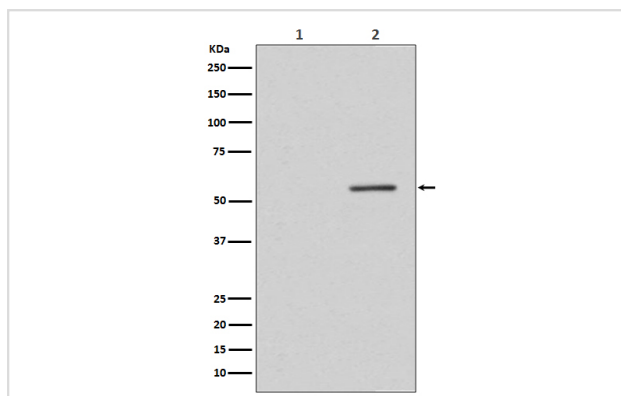
Description

Product Name	PTEN (Phospho-Ser380) Rabbit mAb
Host Species	Rabbit
Clonality	Monoclonal
Isotype	Rabbit IgG
Purification	Affinity-chromatography
Applications	WB ICC/IF
Species Reactivity	Human Mouse Rat
Specificity	Phospho-PTEN (S380) Antibody detects endogenous levels of Phospho-PTEN (S380)
Immunogen Description	A synthesized peptide derived from human PTEN
Other Names	Phosphatase and tensin homolog; PTEN; MMAC1; TEP1;
Accession No.	Uniprot:P60484
Calculated MW	54kDa
Formulation	Rabbit IgG in phosphate buffered saline , pH 7.4, 150mM NaCl, 0.02% sodium azide and 50% glycerol.
Storage	Store at +4°C short term. Store at -20°C long term. Avoid freeze / thaw cycle.

Application Details

WB:1:1000~1:2000 ICC/IF:1:50~1:200

Images



Western blot analysis of Phospho-PTEN (S380) expression in (1) MCF-7 cell treated with alkaline phosphatase lysate; (2) MCF-7 cell lysate.

Product Description

PTEN (phosphatase and tensin homologue deleted on chromosome ten), also referred to as MMAC (mutated in multiple advanced cancers) phosphatase, is a tumor suppressor implicated in a wide variety of human cancers. PTEN regulates p53 protein levels and activity (8) and is involved in G protein-coupled signaling during chemotaxis.

Note: This product is for in vitro research use only and is not intended for use in humans or animals.