

## MEK1 (Phospho-Ser298) Rabbit mAb

Catalog No: #14210



Package Size: #14210-1 50ul #14210-2 100ul

Orders: order@signalwayantibody.com

Support: tech@signalwayantibody.com

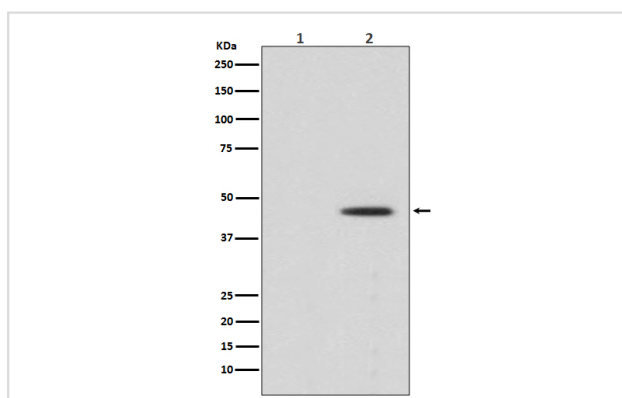
## Description

|                       |  |
|-----------------------|--|
| Product Name          | MEK1 (Phospho-Ser298) Rabbit mAb   |
| Host Species          | Rabbit   |
| Clonality             | Monoclonal   |
| Isotype               | Rabbit IgG   |
| Purification          | Affinity-chromatography  |
| Applications          | WB IHC ICC/IF  |
| Species Reactivity    | Human Mouse Rat  |
| Specificity           | Phospho-MEK1 (S298) Antibody detects endogenous levels of Phospho-MEK1 (S298)  |
| Immunogen Description | A synthesized peptide derived from human MEK1  |
| Other Names           | Dual specificity mitogen-activated protein kinase kinase 1; MAP kinase kinase 1; MAPKK 1; MKK1; ERK activator kinase 1; MAPK/ERK kinase 1; MEK 1; MAP2K1; MEK-1; PRKMK1; |
| Accession No.         | Uniprot:Q02750   |
| Calculated MW         | 45kDa  |
| Formulation           | Rabbit IgG in phosphate buffered saline , pH 7.4, 150mM NaCl, 0.02% sodium azide and 50% glycerol.   |
| Storage               | Store at +4°C short term. Store at -20°C long term. Avoid freeze / thaw cycle.   |

## Application Details

WB:1:1000~1:2000IHC:1:50~1:200ICC/IF:1:50~1:200

## Images



Western blot analysis of Phospho-MEK1 (S298) expression in (1) HeLa cell treated with LP lysate; (2) HeLa cell lysate.

## Product Description

Activation of MEK1 and MEK2 occurs through phosphorylation of two serine residues at positions 217 and 221, located in the activation loop of subdomain VIII, by Raf-like molecules. Catalyzes the concomitant phosphorylation of a threonine and a tyrosine residue in a Thr-Glu-Tyr sequence located in MAP kinases. Activates ERK1 and ERK2 MAP kinases.

---

Note: This product is for in vitro research use only and is not intended for use in humans or animals.