

Smad2 (Phospho-Ser250) Rabbit mAb

Catalog No: #14211



Package Size: #14211-1 50ul #14211-2 100ul

Orders: order@signalwayantibody.com

Support: tech@signalwayantibody.com

Description

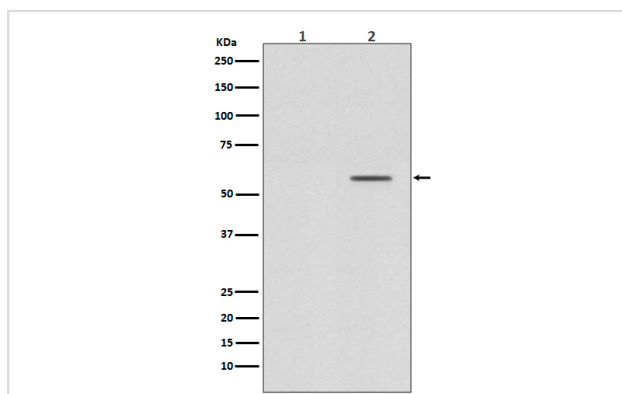
Product Name	Smad2 (Phospho-Ser250) Rabbit mAb
Host Species	Rabbit
Clonality	Monoclonal
Isotype	Rabbit IgG
Purification	Affinity-chromatography
Applications	WB FC
Species Reactivity	Human Mouse Rat
Specificity	Phospho-Smad2 (S250) Antibody detects endogenous levels of Phospho-Smad2 (S250)
Immunogen Description	A synthesized peptide derived from human Smad2
Other Names	JV18-1, MADH2, MADR2, Mad-related protein 2, Mothers against DPP homolog 2, Mothers against decapentaplegic homolog 2, Smad 2;
Accession No.	Uniprot:Q15796
Calculated MW	58kDa
Formulation	Rabbit IgG in phosphate buffered saline , pH 7.4, 150mM NaCl, 0.02% sodium azide and 50% glycerol.
Storage	Store at +4°C short term. Store at -20°C long term. Avoid freeze / thaw cycle.

Application Details

WB:1:1000~1:2000

FC:1:20

Images



Western blot analysis of Phospho-Smad2 (S250) expression in (1) HeLa cell treated with alkaline phosphatase lysate; (2) HeLa cell lysate.

Product Description

The protein encoded by this gene belongs to the SMAD, a family of proteins similar to the gene products of the Drosophila gene 'mothers against decapentaplegic' (Mad) and the C. elegans gene Sma. SMAD proteins are signal transducers and transcriptional modulators that mediate multiple signaling pathways.

Note: This product is for in vitro research use only and is not intended for use in humans or animals.