

AKT1 (Phospho-Thr450) Rabbit mAb

Catalog No: #14216

Package Size: #14216-1 50ul #14216-2 100ul

Orders: order@signalwayantibody.comSupport: tech@signalwayantibody.com

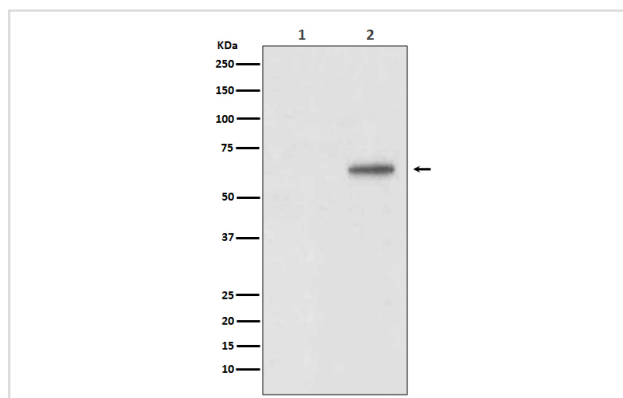
Description

Product Name	AKT1 (Phospho-Thr450) Rabbit mAb
Host Species	Rabbit
Clonality	Monoclonal
Isotype	Rabbit IgG
Purification	Affinity-chromatography
Applications	WB IHC IP
Species Reactivity	Human Mouse Rat
Specificity	Phospho-AKT1 (T450) Antibody detects endogenous levels of Phospho-AKT1 (T450)
Immunogen Description	A synthesized peptide derived from human AKT1
Other Names	AKT 1; PKB; PKB-ALPHA; PRKBA; Protein Kinase B Alpha; Protein kinase B; Proto-oncogene c-Akt; RAC Alpha; RAC-alpha serine/threonine-protein kinase; RAC-PK-alpha;
Accession No.	Uniprot:P31749
Calculated MW	60kDa
Formulation	Rabbit IgG in phosphate buffered saline , pH 7.4, 150mM NaCl, 0.02% sodium azide and 50% glycerol.
Storage	Store at +4°C short term. Store at -20°C long term. Avoid freeze / thaw cycle.

Application Details

WB:1:1000~1:2000IHC:1:50~1:200IP:1:50

Images



Western blot analysis of Phospho-AKT1 (T450) expression in (1) 3T3 cell lysate treated with Lambda Phosphatase; (2) 3T3 cell lysate.

Product Description

Akt, also referred to as PKB or Rac, plays a critical role in controlling survival and apoptosis. This protein kinase is activated by insulin and various growth and survival factors to function in a wortmannin-sensitive pathway involving PI3 kinase. Akt is activated by phospholipid binding and activation loop phosphorylation at Thr308 by PDK1 and by phosphorylation within the carboxy terminus at Ser473.

Note: This product is for in vitro research use only and is not intended for use in humans or animals.