

## AMPK alpha 2 (Phospho-Ser345) Rabbit mAb

Catalog No: #14218

Package Size: #14218-1 50ul #14218-2 100ul

Orders: order@signalwayantibody.com

Support: tech@signalwayantibody.com

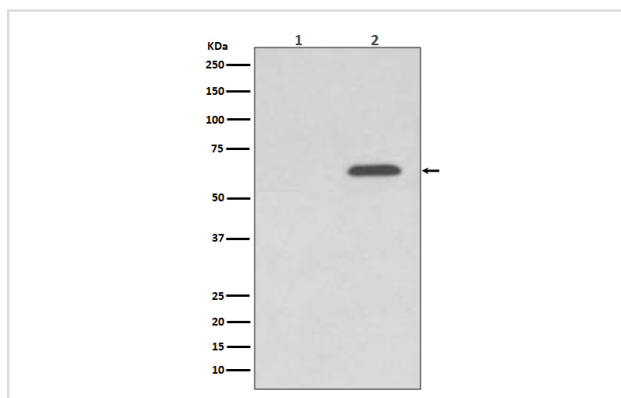
## Description

Product Name	AMPK alpha 2 (Phospho-Ser345) Rabbit mAb
Host Species	Rabbit
Clonality	Monoclonal
Isotype	Rabbit IgG
Purification	Affinity-chromatography
Applications	WB
Species Reactivity	Human Mouse Rat
Specificity	Phospho-AMPK alpha 2 (S345) Antibody detects endogenous levels of Phospho-AMPK alpha 2 (S345)
Immunogen Description	A synthesized peptide derived from human AMPK alpha 2
Other Names	ACACA kinase; Acetyl-CoA carboxylase kinase; AMPK subunit alpha-2; AMPK2; AMPKalpha2; HMGCR kinase; Hydroxymethylglutaryl-CoA reductase kinase; PRKAA; PRKAA2;
Accession No.	Uniprot:P54646
Calculated MW	64kDa
Formulation	Rabbit IgG in phosphate buffered saline , pH 7.4, 150mM NaCl, 0.02% sodium azide and 50% glycerol.
Storage	Store at +4°C short term. Store at -20°C long term. Avoid freeze / thaw cycle.

## Application Details

WB:1:1000~1:2000

## Images



Western blot analysis of Phospho-AMPK alpha 2 (S345) expression in (1) 293T cell lysate treated with Lambda Phosphatase; (2) 293T cell lysate.

## Product Description

AMP-activated protein kinase (AMPK) is highly conserved from yeast to plants and animals and plays a key role in the regulation of energy homeostasis. AMPK is a heterotrimeric complex composed of a catalytic  $\alpha$  subunit and regulatory  $\beta$  and  $\gamma$  subunits, each of which is encoded by two or three distinct genes ( $\alpha 1, 2$ ;  $\beta 1, 2$ ;  $\gamma 1, 2, 3$ ). The kinase is activated by an elevated AMP/ATP ratio due to cellular and environmental stress, such as heat shock, hypoxia, and ischemia.

---

Note: This product is for in vitro research use only and is not intended for use in humans or animals.