

AMPK alpha 2 (Phospho-Ser491) Rabbit mAb

Catalog No: #14221



Package Size: #14221-1 50ul #14221-2 100ul

Orders: order@signalwayantibody.com

Support: tech@signalwayantibody.com

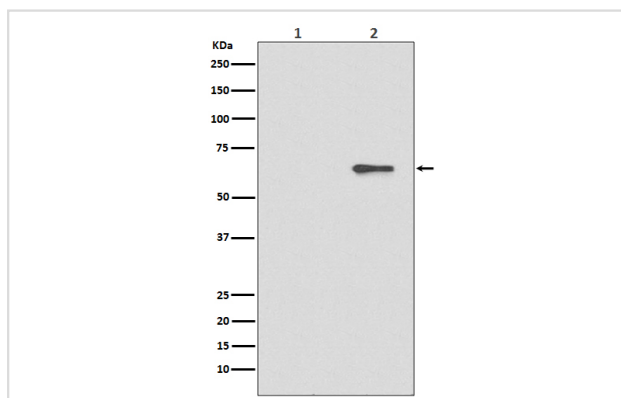
Description

Product Name	AMPK alpha 2 (Phospho-Ser491) Rabbit mAb
Host Species	Rabbit
Clonality	Monoclonal
Isotype	Rabbit IgG
Purification	Affinity-chromatography
Applications	WB
Species Reactivity	Human Mouse Rat
Specificity	Phospho-AMPK alpha 2 (S491) Antibody detects endogenous levels of Phospho-AMPK alpha 2 (S491)
Immunogen Description	A synthesized peptide derived from human AMPK alpha 2
Other Names	5'-AMP-activated protein kinase catalytic subunit alpha-2; ACACA kinase; Acetyl-CoA carboxylase kinase; AMPK alpha 2 chain; AMPK subunit alpha-2; AMPK2; AMPKalpha2; PRKAA2;
Accession No.	Uniprot:P54646
Calculated MW	62kDa
Formulation	Rabbit IgG in phosphate buffered saline , pH 7.4, 150mM NaCl, 0.02% sodium azide and 50% glycerol.
Storage	Store at +4°C short term. Store at -20°C long term. Avoid freeze / thaw cycle.

Application Details

WB:1:1000~1:2000

Images



Western blot analysis of AMPK beta 1 expression in (1) 293T cell lysate treated with Lambda lysate; (2) 293T cell lysate.

Product Description

AMP-activated protein kinase (AMPK) is highly conserved from yeast to plants and animals and plays a key role in the regulation of energy homeostasis. AMPK is a heterotrimeric complex composed of a catalytic α subunit and regulatory β and γ subunits, each of which is encoded by two or three distinct genes (α 1, 2; β 1, 2; γ 1, 2, 3).

Note: This product is for in vitro research use only and is not intended for use in humans or animals.