

## Cdc6 (Phospho-Ser54) Rabbit mAb

Catalog No: #14225

Package Size: #14225-1 50ul #14225-2 100ul

Orders: order@signalwayantibody.com

Support: tech@signalwayantibody.com

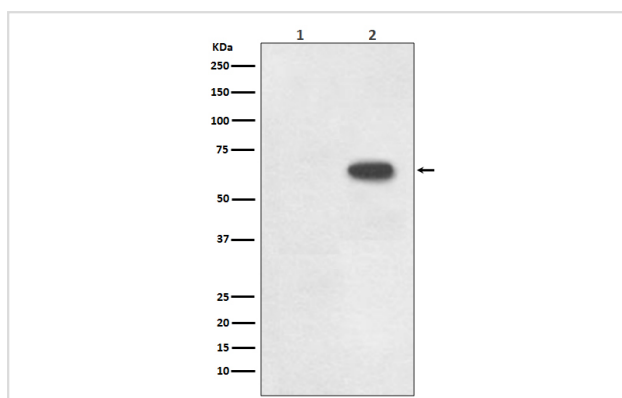
## Description

Product Name	Cdc6 (Phospho-Ser54) Rabbit mAb
Host Species	Rabbit
Clonality	Monoclonal
Isotype	Rabbit IgG
Purification	Affinity-chromatography
Applications	WB ICC/IF
Species Reactivity	Human
Specificity	Phospho-Cdc6 (S54) Antibody detects endogenous levels of total Phospho-Cdc6 (S54)
Immunogen Description	A synthesized peptide derived from human Phospho-Cdc6 (S54)
Other Names	CDC6; CDC18L; CDC6-related protein; Cdc18-related protein; HsCDC6; HsCDC18; p62(cdc6);
Accession No.	Uniprot:Q99741
Calculated MW	63kDa
Formulation	Rabbit IgG in phosphate buffered saline , pH 7.4, 150mM NaCl, 0.02% sodium azide and 50% glycerol.
Storage	Store at +4°C short term. Store at -20°C long term. Avoid freeze / thaw cycle.

## Application Details

WB:1:500~1:1000 ICC/IF:1:50~1:200

## Images



Western blot analysis of Phospho-Cdc6 (S54) expression in (1) Raji cell lysate; (2) Raji + FBS cell lysate.

## Product Description

Involved in the initiation of DNA replication. Also participates in checkpoint controls that ensure DNA replication is completed before mitosis is initiated. Cdc6 has recently been shown to play an important role in the intra-S-phase p21 Waf1/Cip1-dependent DNA damage response. Both cdc6 and CDT1 are degraded by the ubiquitin proteasome pathway in response to DNA damage associated with re-replication.

---

Note: This product is for in vitro research use only and is not intended for use in humans or animals.