

## IRF3 (Phospho-Ser386) Rabbit mAb

Catalog No: #14244



Package Size: #14244-1 50ul #14244-2 100ul

Orders: order@signalwayantibody.com

Support: tech@signalwayantibody.com

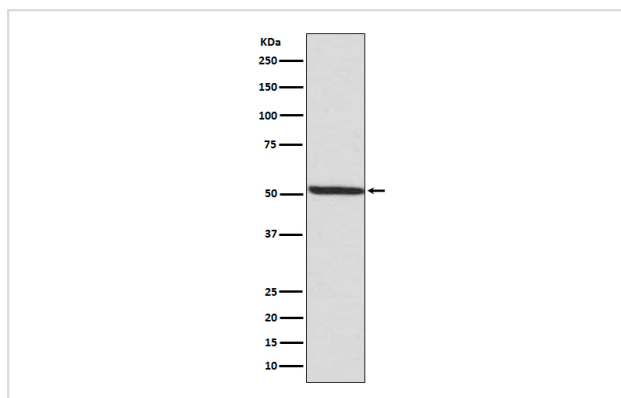
## Description

Product Name	IRF3 (Phospho-Ser386) Rabbit mAb
Host Species	Rabbit
Clonality	Monoclonal
Isotype	Rabbit IgG
Purification	Affinity-chromatography
Applications	WB ICC/IF
Species Reactivity	Human
Specificity	Phospho-IRF3 (S386) Antibody detects endogenous levels of total Phospho-IRF3 (S386)
Immunogen Description	A synthesized peptide derived from human Phospho-IRF3 (S386)
Other Names	IRF3; Interferon regulatory factor 3;
Accession No.	Uniprot:Q14653
Calculated MW	47kDa
Formulation	Rabbit IgG in phosphate buffered saline , pH 7.4, 150mM NaCl, 0.02% sodium azide and 50% glycerol.
Storage	Store at +4°C short term. Store at -20°C long term. Avoid freeze / thaw cycle.

## Application Details

WB:1:1000~1:2000|ICC/IF:1:50~1:200

## Images



Western blot analysis of Phospho-IRF3 (S386) expression in MCF7 cell lysate.

## Product Description

Mediates interferon-stimulated response element (ISRE) promoter activation. Functions as a molecular switch for antiviral activity. DsRNA generated during the course of a viral infection leads to IRF3 phosphorylation on the C-terminal serine/threonine cluster. This induces a conformational change, leading to its dimerization, nuclear localization and association with CREB binding protein (CREBBP) to form dsRNA-activated factor 1 (DRAF1), a complex which activates the transcription of genes under the control of ISRE.

---

Note: This product is for in vitro research use only and is not intended for use in humans or animals.