

POLR2A (Phospho-Ser5) Rabbit mAb

Catalog No: #14249



Package Size: #14249-1 50ul #14249-2 100ul

Orders: order@signalwayantibody.com

Support: tech@signalwayantibody.com

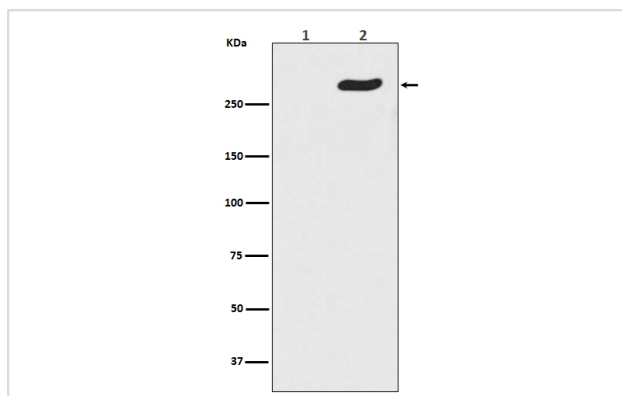
Description

| | |
|-----------------------|--|
| Product Name | POLR2A (Phospho-Ser5) Rabbit mAb |
| Host Species | Rabbit |
| Clonality | Monoclonal |
| Isotype | Rabbit IgG |
| Purification | Affinity-chromatography |
| Applications | WB IHC ICC/IF IP FC |
| Species Reactivity | Human Mouse Rat |
| Specificity | Phospho-POLR2A (S5) Antibody detects endogenous levels of total Phospho-POLR2A (S5) |
| Immunogen Description | A synthesized peptide derived from human POLR2A |
| Other Names | POLR2A; POLR2; RNA polymerase II CTD repeat YSPTSPS; |
| Accession No. | Uniprot:P24928 |
| Calculated MW | 270kDa |
| Formulation | Rabbit IgG in phosphate buffered saline , pH 7.4, 150mM NaCl, 0.02% sodium azide and 50% glycerol. |
| Storage | Store at +4°C short term. Store at -20°C long term. Avoid freeze / thaw cycle. |

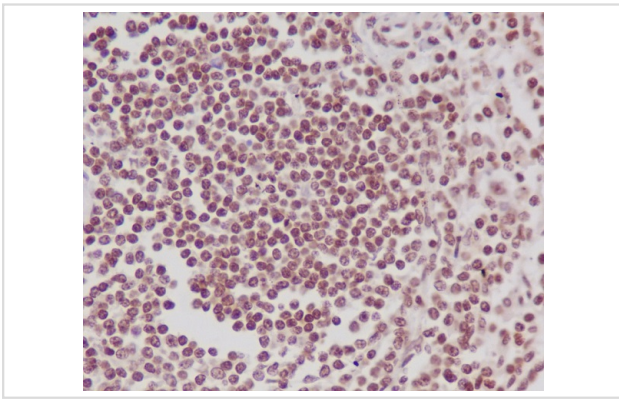
Application Details

WB:1:500~1:2000IHC:1:50~1:200ICC/IF:1:50~1:200IP:1:20FC:1:40

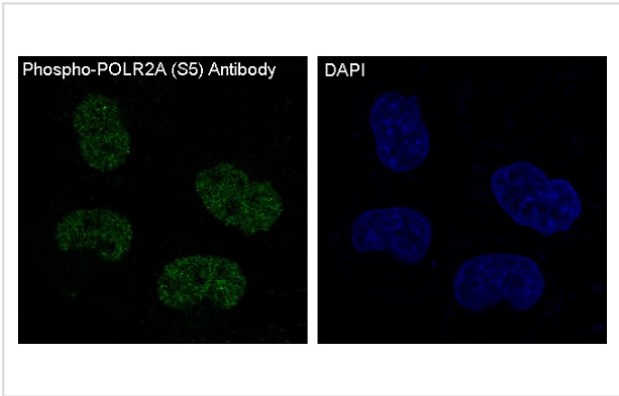
Images



Western blot analysis of Phospho-POLR2A (S5) expression in (1) HeLa cell lysate treated with Lambda Phosphatase; (2) HeLa cell lysate.



Immunohistochemical analysis of paraffin-embedded human spleen, using Phospho-POLR2A (S5) Antibody.



Immunofluorescent analysis of HeLa cells, using Phospho-POLR2A (S5) Antibody .

Product Description

Acts as an RNA-dependent RNA polymerase when associated with small delta antigen of Hepatitis delta virus, acting both as a replicate and transcriptase for the viral RNA circular genome.

Note: This product is for in vitro research use only and is not intended for use in humans or animals.