

## Lysophospholipase 1 Rabbit mAb

Catalog No: #14255



Package Size: #14255-1 50ul #14255-2 100ul

Orders: order@signalwayantibody.com

Support: tech@signalwayantibody.com

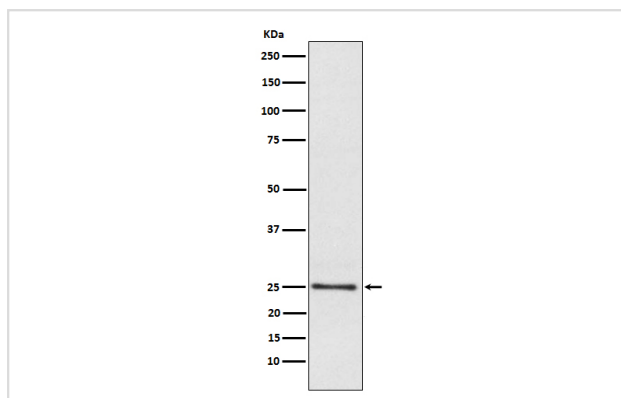
## Description

Product Name	Lysophospholipase 1 Rabbit mAb
Host Species	Rabbit
Clonality	Monoclonal
Isotype	Rabbit IgG
Purification	Affinity-chromatography
Applications	WB ICC FC
Species Reactivity	Human Mouse Rat
Specificity	Lysophospholipase 1 Antibody detects endogenous levels of total Lysophospholipase 1
Immunogen Description	A synthesized peptide derived from human Lysophospholipase 1
Other Names	APT1; hAPT1; LPL1; LYPLA1; Lysophospholipase 1; LYSOPLA; LysoPLA I;
Accession No.	Uniprot:O75608
Calculated MW	25 kDa
Formulation	Rabbit IgG in phosphate buffered saline , pH 7.4, 150mM NaCl, 0.02% sodium azide and 50% glycerol.
Storage	Store at +4°C short term. Store at -20°C long term. Avoid freeze / thaw cycle.

## Application Details

WB:1:500~1:2000IC/IF:1:50~1:200FC:1:50

## Images



Western blot analysis of Lysophospholipase 1 expression in Human fetal liver lysate.

## Product Description

Hydrolyzes fatty acids from S-acylated cysteine residues in proteins such as trimeric G alpha proteins or HRAS. Has depalmitoylating activity and also low lysophospholipase activity.

---

Note: This product is for in vitro research use only and is not intended for use in humans or animals.