

KAP1 (Phospho-Ser824) Rabbit mAb

Catalog No: #14256

Package Size: #14256-1 50ul #14256-2 100ul

Orders: order@signalwayantibody.comSupport: tech@signalwayantibody.com

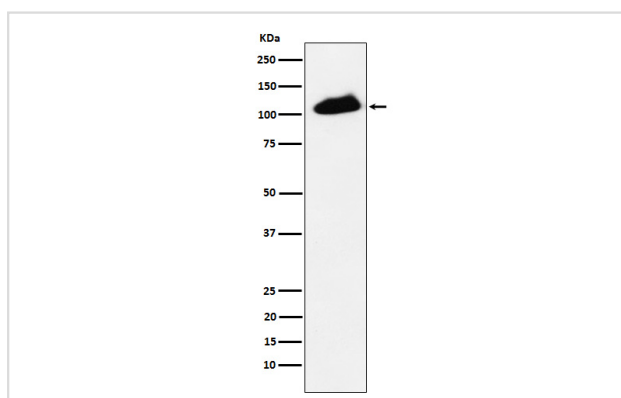
Description

Product Name	KAP1 (Phospho-Ser824) Rabbit mAb
Host Species	Rabbit
Clonality	Monoclonal
Isotype	Rabbit IgG
Purification	Affinity-chromatography
Applications	WB IP
Species Reactivity	Human
Specificity	Phospho-KAP1 (S824) Antibody detects endogenous levels of total Phospho-KAP1 (S824)
Immunogen Description	A synthesized peptide derived from human KAP1
Other Names	KAP 1; KRAB associated protein 1; KRIP1; RNF96; TF1B; TIF1 beta; TIF1B; Trim28; Tripartite motif containing 28;
Accession No.	Uniprot:Q13263
Calculated MW	110kDa
Formulation	Rabbit IgG in phosphate buffered saline , pH 7.4, 150mM NaCl, 0.02% sodium azide and 50% glycerol.
Storage	Store at +4°C short term. Store at -20°C long term. Avoid freeze / thaw cycle.

Application Details

WB: 1:500~1:2000 IP: 1:50

Images



Western blot analysis of Phospho-KAP1 (S824) expression in HeLa cell treated with etoposide.

Product Description

Nuclear corepressor for KRAB domain-containing zinc finger proteins (KRAB-ZFPs). Mediates gene silencing by recruiting CHD3, a subunit of the nucleosome remodeling and deacetylation (NuRD) complex, and SETDB1 (which specifically methylates histone H3 at 'Lys-9' (H3K9me)) to the promoter regions of KRAB target genes.

Note: This product is for in vitro research use only and is not intended for use in humans or animals.