

# IκB alpha (Phospho-Ser36) Rabbit mAb

Catalog No: #14260



Package Size: #14260-1 50ul #14260-2 100ul

Orders: [order@signalwayantibody.com](mailto:order@signalwayantibody.com)

Support: [tech@signalwayantibody.com](mailto:tech@signalwayantibody.com)

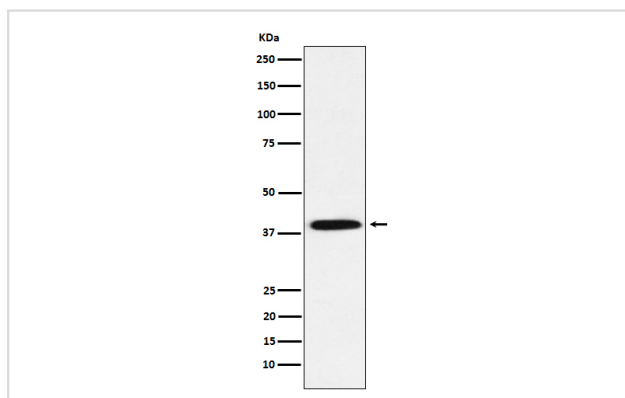
## Description

Product Name	IκB alpha (Phospho-Ser36) Rabbit mAb
Host Species	Rabbit
Clonality	Monoclonal
Isotype	Rabbit IgG
Purification	Affinity-chromatography
Applications	WB FC
Species Reactivity	Human Mouse
Specificity	Phospho-IκB alpha (S36) Antibody detects endogenous levels of total Phospho-IκB alpha (S36)
Immunogen Description	A synthesized peptide derived from human Phospho-IκB alpha (S36)
Other Names	I kappa B alpha; IkappaBalpha; IκB-alpha; IKBA; IKBalpa; MAD3; NF kappa B inhibitor alpha; NFKB1; NFKBIA;
Accession No.	Uniprot:P25963
Calculated MW	39kDa
Formulation	Rabbit IgG in phosphate buffered saline , pH 7.4, 150mM NaCl, 0.02% sodium azide and 50% glycerol.
Storage	Store at +4°C short term. Store at -20°C long term. Avoid freeze / thaw cycle.

## Application Details

WB:1:500~1:2000FC:1:50

## Images



Western blot analysis of Phospho-IκB alpha (S36) expression in HeLa cell lysate treated with Calyculin A.

## Product Description

Inhibits the activity of dimeric NF-κB/REL complexes by trapping REL dimers in the cytoplasm through masking of their nuclear localization signals. On cellular stimulation by immune and proinflammatory responses, becomes phosphorylated promoting ubiquitination and degradation, enabling the dimeric RELA to translocate to the nucleus and activate transcription.

---

Note: This product is for in vitro research use only and is not intended for use in humans or animals.