

## PDHA1 (Phospho-Ser293) Rabbit mAb

Catalog No: #14261



Package Size: #14261-1 50ul #14261-2 100ul

Orders: order@signalwayantibody.com

Support: tech@signalwayantibody.com

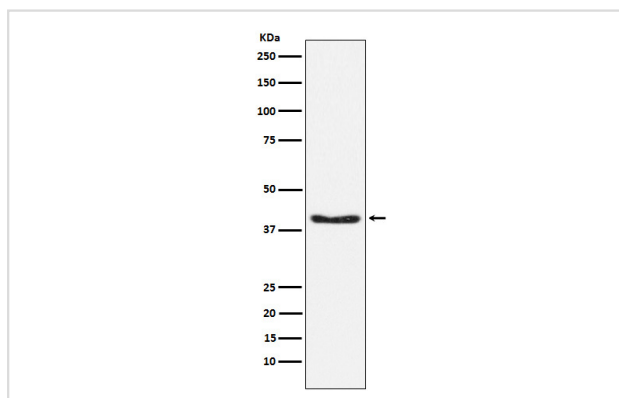
## Description

Product Name	PDHA1 (Phospho-Ser293) Rabbit mAb
Host Species	Rabbit
Clonality	Monoclonal
Isotype	Rabbit IgG
Purification	Affinity-chromatography
Applications	WB IHC IP
Species Reactivity	Human Mouse Rat
Specificity	Phospho-PDHA1 (S293) Antibody detects endogenous levels of total Phospho-PDHA1 (S293)
Immunogen Description	A synthesized peptide derived from human Phospho-PDHA1 (S293)
Other Names	PDH; PDHA; PDHA1; PDHCE1A; PHE1A; Pyruvate Dehydrogenase (lipoamide) alpha 1; Pyruvate Dehydrogenase E1 alpha;
Accession No.	Uniprot:P08559
Calculated MW	40kDa
Formulation	Rabbit IgG in phosphate buffered saline , pH 7.4, 150mM NaCl, 0.02% sodium azide and 50% glycerol.
Storage	Store at +4°C short term. Store at -20°C long term. Avoid freeze / thaw cycle.

## Application Details

WB: 1:500~1:2000 IHC: 1:50~1:200 IP: 1:50

## Images



Western blot analysis of Phospho-PDHA1 (S293) expression in 293T cell lysate.

## Product Description

The pyruvate dehydrogenase complex catalyzes the overall conversion of pyruvate to acetyl-CoA and CO<sub>2</sub>. It contains multiple copies of three enzymatic components: pyruvate dehydrogenase (E1), dihydrolipoamide acetyltransferase (E2) and lipoamide dehydrogenase (E3).

---

Note: This product is for in vitro research use only and is not intended for use in humans or animals.