

## MLKL (Phospho-Ser345) Rabbit mAb

Catalog No: #14264

Package Size: #14264-1 50ul #14264-2 100ul

Orders: order@signalwayantibody.com

Support: tech@signalwayantibody.com

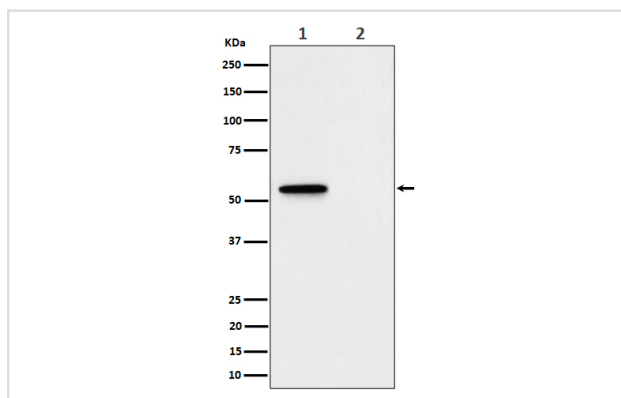
## Description

Product Name	MLKL (Phospho-Ser345) Rabbit mAb
Host Species	Rabbit
Clonality	Monoclonal
Isotype	Rabbit IgG
Purification	Affinity-chromatography
Applications	WB IP
Species Reactivity	Mouse
Specificity	Phospho-MLKL (S345) Antibody detects endogenous levels of total Phospho-MLKL (S345)
Immunogen Description	A synthesized peptide derived from human Phospho-MLKL (S345)
Other Names	hMLKL ; Mixed lineage kinase domain like; Mixed lineage kinase domain like protein; Mixed lineage kinase domain like pseudokinase;
Accession No.	Uniprot:Q9D2Y4
Calculated MW	54kDa
Formulation	Rabbit IgG in phosphate buffered saline , pH 7.4, 150mM NaCl, 0.02% sodium azide and 50% glycerol.
Storage	Store at +4°C short term. Store at -20°C long term. Avoid freeze / thaw cycle.

## Application Details

WB: 1:500~1:2000 IP: 1:50

## Images



Western blot analysis of Phospho-MLKL (S345) expression in (1) L929 treated with Z-VAD + TNF alpha + SM164 cell lysate; (2) Untreated.

## Product Description

Pseudokinase that plays a key role in TNF-induced necroptosis, a programmed cell death process (PubMed:22265413, PubMed:22265414, PubMed:22421439, PubMed:24316671).

---

Note: This product is for in vitro research use only and is not intended for use in humans or animals.