

CBL (Phospho-Tyr774) Rabbit mAb

Catalog No: #14270

Package Size: #14270-1 50ul #14270-2 100ul

Orders: order@signalwayantibody.com

Support: tech@signalwayantibody.com

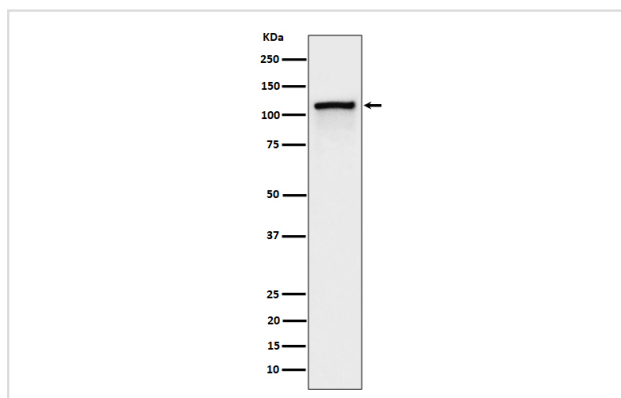
Description

Product Name	CBL (Phospho-Tyr774) Rabbit mAb
Host Species	Rabbit
Clonality	Monoclonal
Isotype	Rabbit IgG
Purification	Affinity-chromatography
Applications	WB IHC FC
Species Reactivity	Human
Specificity	Phospho-CBL (Y774) Antibody detects endogenous levels of total Phospho-CBL (Y774)
Immunogen Description	A synthesized peptide derived from human Phospho-CBL (Y774)
Other Names	Casitas B lineage lymphoma proto oncogene; CBL2; E3 ubiquitin protein ligase CBL; Oncogene CBL2; Proto oncogene c CBL; RING finger protein 55; RNF55; Signal transduction protein CBL;
Accession No.	Uniprot:P22681
Calculated MW	120kDa
Formulation	Rabbit IgG in phosphate buffered saline , pH 7.4, 150mM NaCl, 0.02% sodium azide and 50% glycerol.
Storage	Store at +4°C short term. Store at -20°C long term. Avoid freeze / thaw cycle.

Application Details

WB:1:500~1:2000IHC:1:50~1:200FC:1:50

Images



Western blot analysis of Phospho-CBL (Y774) expression in Jurkat cell treated with Pervanadate lysate.

Product Description

Participates in signal transduction in hematopoietic cells. Adapter protein that functions as a negative regulator of many signaling pathways that start from receptors at the cell surface. Acts as an E3 ubiquitin-protein ligase, which accepts ubiquitin from specific E2 ubiquitin-conjugating enzymes, and then transfers it to substrates promoting their degradation by the proteasome. Recognizes activated receptor tyrosine kinases, including PDGFA, EGF and CSF1, and terminates signaling.

Note: This product is for in vitro research use only and is not intended for use in humans or animals.