

CBL(Phospho-Ser669) Rabbit mAb

Catalog No: #14272

Package Size: #14272-1 50ul #14272-2 100ul

Orders: order@signalwayantibody.com

Support: tech@signalwayantibody.com

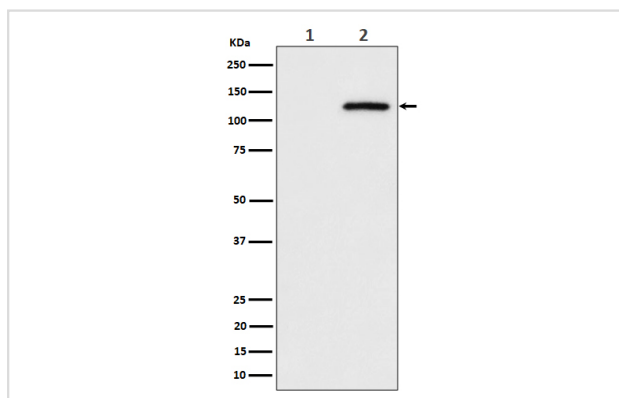
Description

Product Name	CBL(Phospho-Ser669) Rabbit mAb
Host Species	Rabbit
Clonality	Monoclonal
Isotype	Rabbit IgG
Purification	Affinity-chromatography
Applications	WB
Species Reactivity	Human Mouse Rat
Specificity	Phospho-CBL (S669) Antibody detects endogenous levels of total Phospho-CBL (S669)
Immunogen Description	A synthesized peptide derived from human Phospho-CBL (S669)
Other Names	Casitas B lineage lymphoma proto oncogene; cbl; CBL2; E3 ubiquitin protein ligase CBL; Oncogene CBL2; Proto oncogene c CBL; RING finger protein 55; RNF55; Signal transduction protein CBL;
Accession No.	Uniprot:P22681
Calculated MW	120kDa
Formulation	Rabbit IgG in phosphate buffered saline , pH 7.4, 150mM NaCl, 0.02% sodium azide and 50% glycerol.
Storage	Store at +4°C short term. Store at -20°C long term. Avoid freeze / thaw cycle.

Application Details

WB: 1:500~1:2000

Images



Western blot analysis of Phospho-CBL (S669) expression in (1) HeLa cell lysate; (2) HeLa cell treated with pervanadate lysate.

Product Description

Participates in signal transduction in hematopoietic cells. Adapter protein that functions as a negative regulator of many signaling pathways that start from receptors at the cell surface. Acts as an E3 ubiquitin-protein ligase, which accepts ubiquitin from specific E2 ubiquitin-conjugating enzymes, and then transfers it to substrates promoting their degradation by the proteasome.

Note: This product is for in vitro research use only and is not intended for use in humans or animals.