

MCM2 (Phospho-Ser27) Rabbit mAb

Catalog No: #14273

Package Size: #14273-1 50ul #14273-2 100ul

Orders: order@signalwayantibody.com

Support: tech@signalwayantibody.com

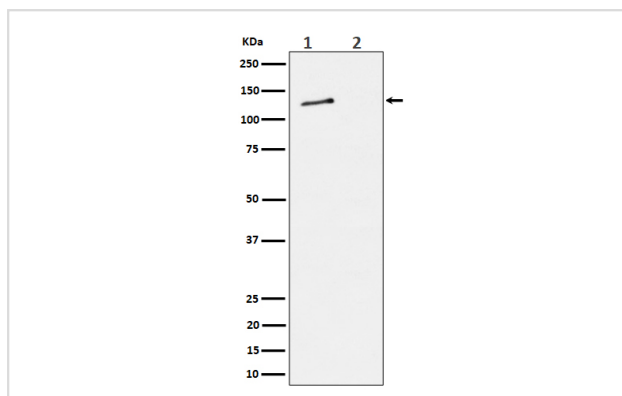
Description

Product Name	MCM2 (Phospho-Ser27) Rabbit mAb
Host Species	Rabbit
Clonality	Monoclonal
Isotype	Rabbit IgG
Purification	Affinity-chromatography
Applications	WB IHC ICC/IF IP
Species Reactivity	Human Mouse Rat
Specificity	Phospho-MCM2 (S27) Antibody detects endogenous levels of total Phospho-MCM2 (S27)
Immunogen Description	A synthesized peptide derived from human Phospho-MCM2 (S27)
Other Names	BM28; CCNL1; cdc19; CDCL1; Cyclin like 1; MCM2;
Accession No.	Uniprot:P49736
Calculated MW	125kDa
Formulation	Rabbit IgG in phosphate buffered saline , pH 7.4, 150mM NaCl, 0.02% sodium azide and 50% glycerol.
Storage	Store at +4°C short term. Store at -20°C long term. Avoid freeze / thaw cycle.

Application Details

WB:1:500~1:2000IHC:1:50~1:200ICC/IF:1:50~1:200IP:1:50

Images



Western blot analysis of Phospho-MCM2 (S27) expression in (1) HeLa cell lysate; (2) HeLa cell treated with alkaline phosphatase lysate.

Product Description

Acts as component of the MCM2-7 complex (MCM complex) which is the putative replicative helicase essential for 'once per cell cycle' DNA replication initiation and elongation in eukaryotic cells.

Note: This product is for in vitro research use only and is not intended for use in humans or animals.