

Nucleolin (Phospho-Thr76) Rabbit mAb

Catalog No: #14280



Package Size: #14280-1 50ul #14280-2 100ul

Orders: order@signalwayantibody.com

Support: tech@signalwayantibody.com

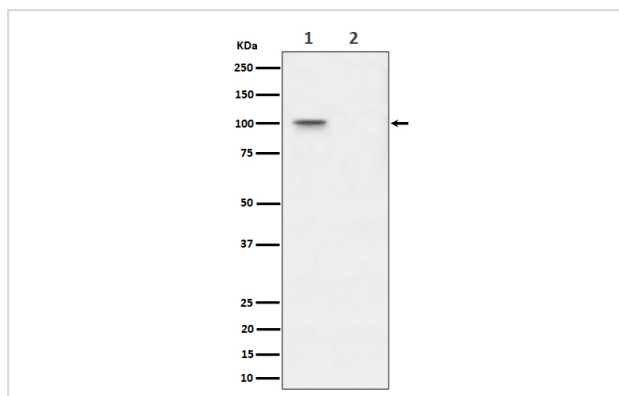
Description

Product Name	Nucleolin (Phospho-Thr76) Rabbit mAb
Host Species	Rabbit
Clonality	Monoclonal
Isotype	Rabbit IgG
Purification	Affinity-chromatography
Applications	WB IHC
Species Reactivity	Human
Specificity	Phospho-Nucleolin (T76) Antibody detects endogenous levels of total Phospho-Nucleolin (T76)
Immunogen Description	A synthesized peptide derived from human Phospho-Nucleolin (T76)
Other Names	MS1116; NCL; Nucl; Nucleolin; Protein C23;
Accession No.	Uniprot:P19338
Calculated MW	100kDa
Formulation	Rabbit IgG in phosphate buffered saline , pH 7.4, 150mM NaCl, 0.02% sodium azide and 50% glycerol.
Storage	Store at +4°C short term. Store at -20°C long term. Avoid freeze / thaw cycle.

Application Details

WB:1:500~1:2000IHC:1:50~1:200

Images



Western blot analysis of Phospho-Nucleolin (T76) expression in (1) 293T cell lysate; (2) 293T cell treated with Lambda Phosphatase lysate.

Product Description

Nucleolin is the major nucleolar protein of growing eukaryotic cells. It is found associated with intranucleolar chromatin and pre-ribosomal particles. It induces chromatin decondensation by binding to histone H1.

Note: This product is for in vitro research use only and is not intended for use in humans or animals.