

Flotillin 2 Rabbit mAb

Catalog No: #56002

Package Size: #56002-1 50ul #56002-2 100ul

Orders: order@signalwayantibody.com

Support: tech@signalwayantibody.com

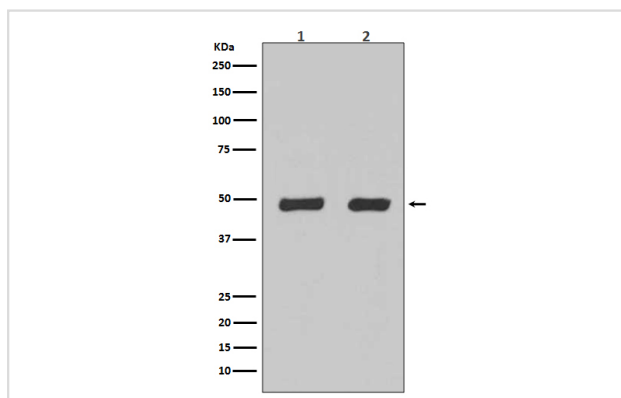
Description

Product Name	Flotillin 2 Rabbit mAb
Host Species	Rabbit
Clonality	Monoclonal
Isotype	Rabbit IgG
Purification	Affinity-chromatography
Applications	WB IP
Species Reactivity	Human Mouse Rat
Specificity	Flotillin 2 Antibody detects endogenous levels of total Flotillin 2
Immunogen Description	A synthesized peptide derived from human Flotillin 2
Other Names	epidermal surface antigen; ESA; flotillin-2; Membrane component chromosome 17 surface marker 1; ESA1; M17S1
Accession No.	Uniprot:Q14254
Calculated MW	47kDa
Formulation	Rabbit IgG in phosphate buffered saline , pH 7.4, 150mM NaCl, 0.02% sodium azide and 50% glycerol.
Storage	Store at +4°C short term. Store at -20°C long term. Avoid freeze / thaw cycle.

Application Details

WB:1:500~1:2000IP:1:30

Images



Western blot analysis of Flotillin-2 expression in (1) HeLa cell lysate;(2) 293 cell lysate.

Product Description

May act as a scaffolding protein within caveolar membranes, functionally participating in formation of caveolae or caveolae-like vesicles. May be involved in epidermal cell adhesion and epidermal structure and function.

Note: This product is for in vitro research use only and is not intended for use in humans or animals.